

The background image shows the Great Zimbabwe ruins, featuring stone walls and a circular tower under a blue sky with clouds. The text "GREAT" is overlaid on a black rectangular box in the upper left portion of the image.

GREAT

ZIMBABWE

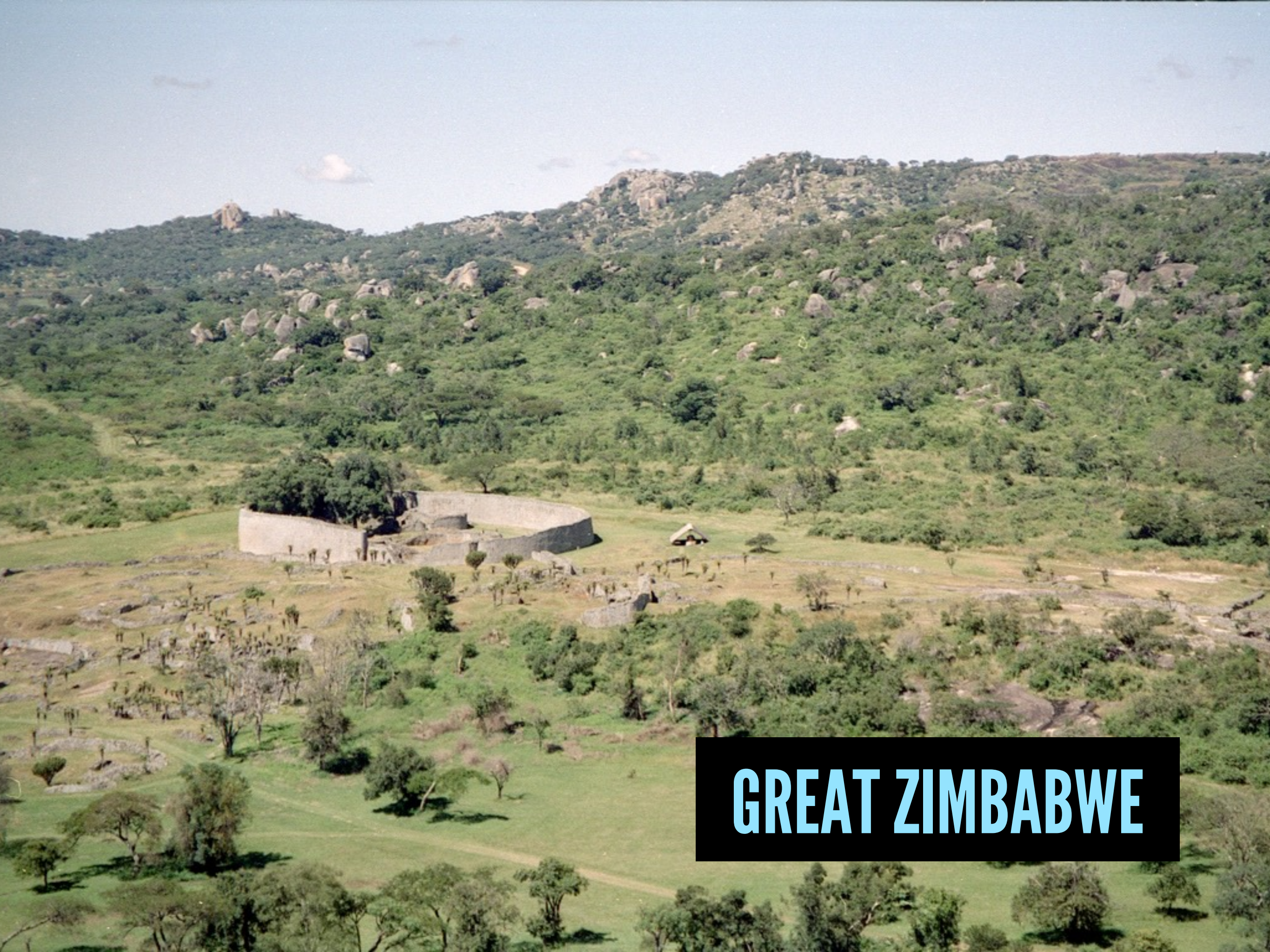






GREAT ZIMBABWE





GREAT ZIMBABWE

- ① **GREAT ENCLOSURE**
- ② **VALLEY COMPLEX**
- ③ **HILL COMPLEX (HILL FORT)**

① GREAT ENCLOSURE

② VALLEY COMPLEX

③ HILL COMPLEX (HILL FORT)

GREAT ENCLOSURE



GREAT ENCLOSURE





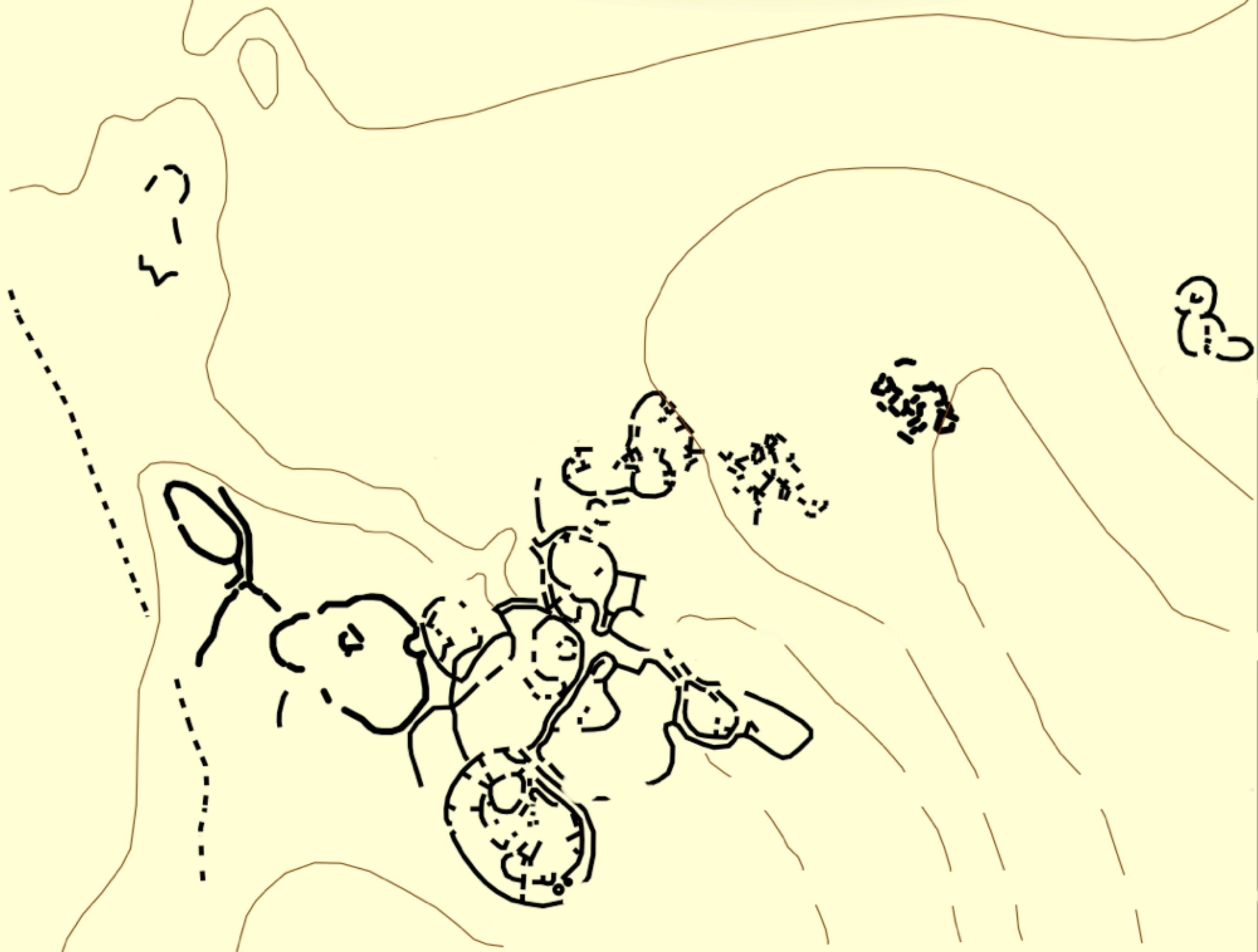










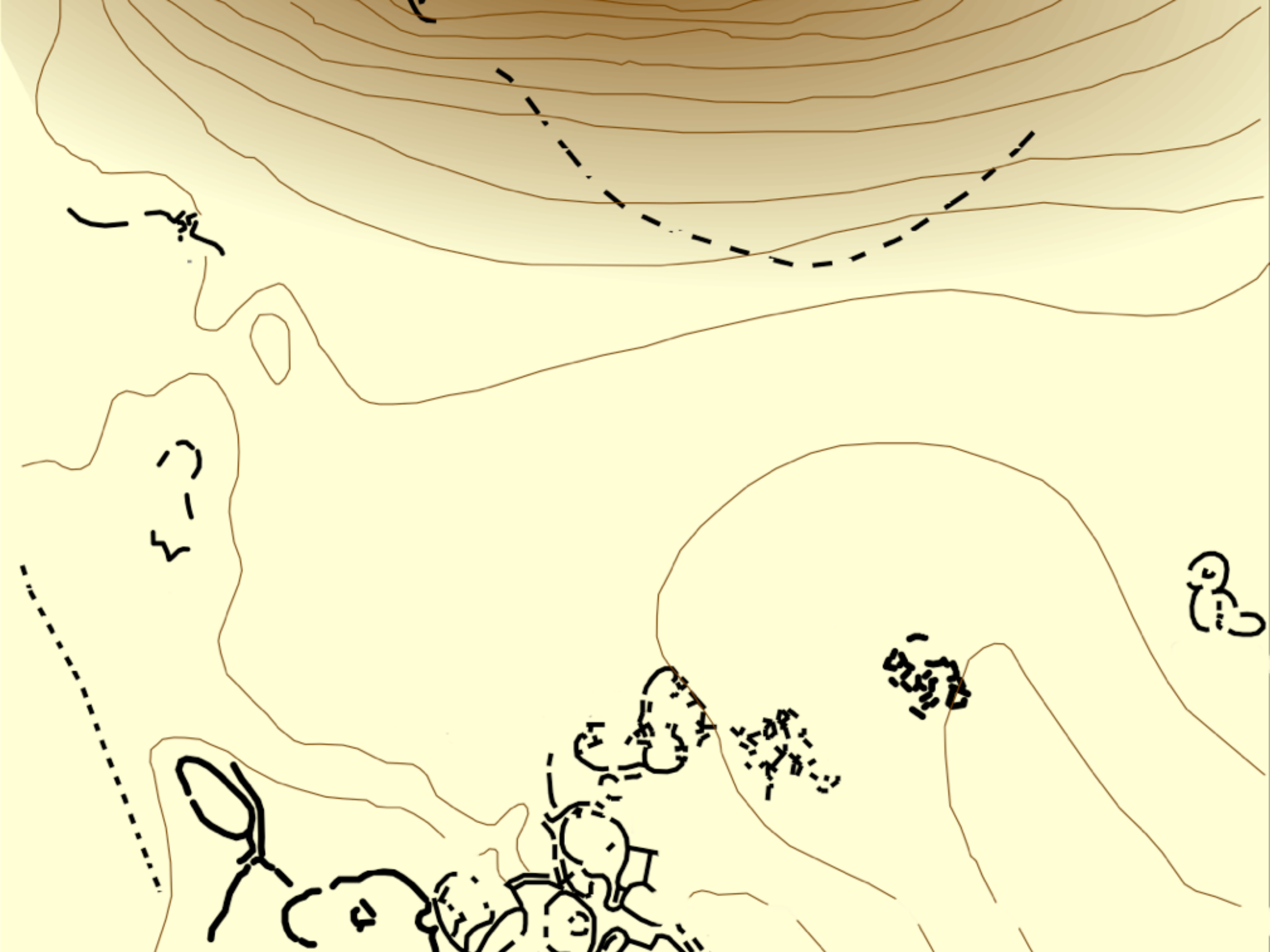




① GREAT ENCLOSURE

② VALLEY COMPLEX

③ HILL COMPLEX (HILL FORT)



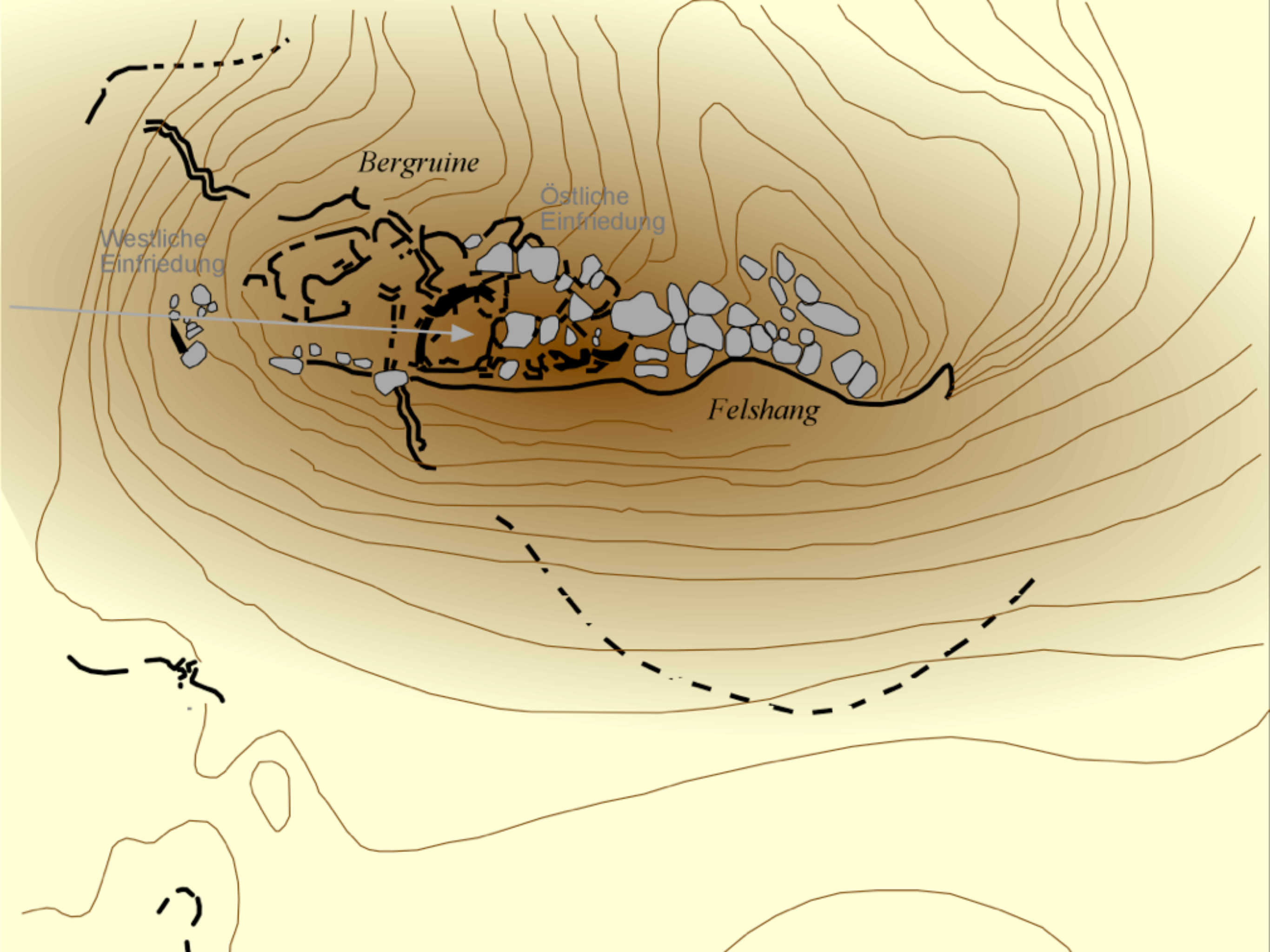




① GREAT ENCLOSURE

② VALLEY COMPLEX

③ HILL COMPLEX (HILL FORT)













EASTERN ENCLOSURE



"Among the gold mines of the inland plains between the Limpopo and Zambezi rivers there is a fortress built of stones of marvelous size, and there appears to be no mortar joining them.... This edifice is almost surrounded by hills, upon which are others resembling it in the fashioning of stone and the absence of mortar, and one of them is a tower more than 12 fathoms high."

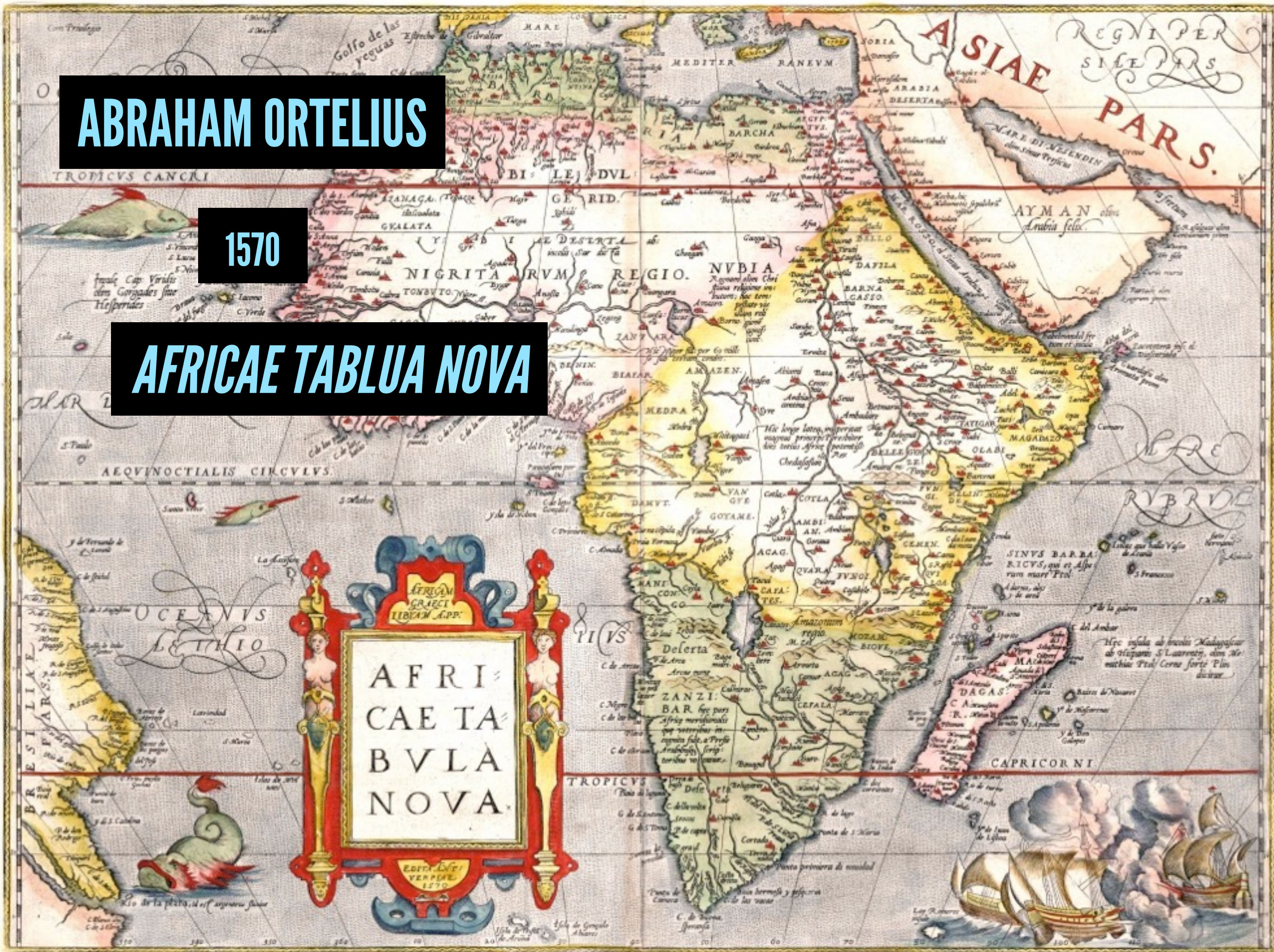


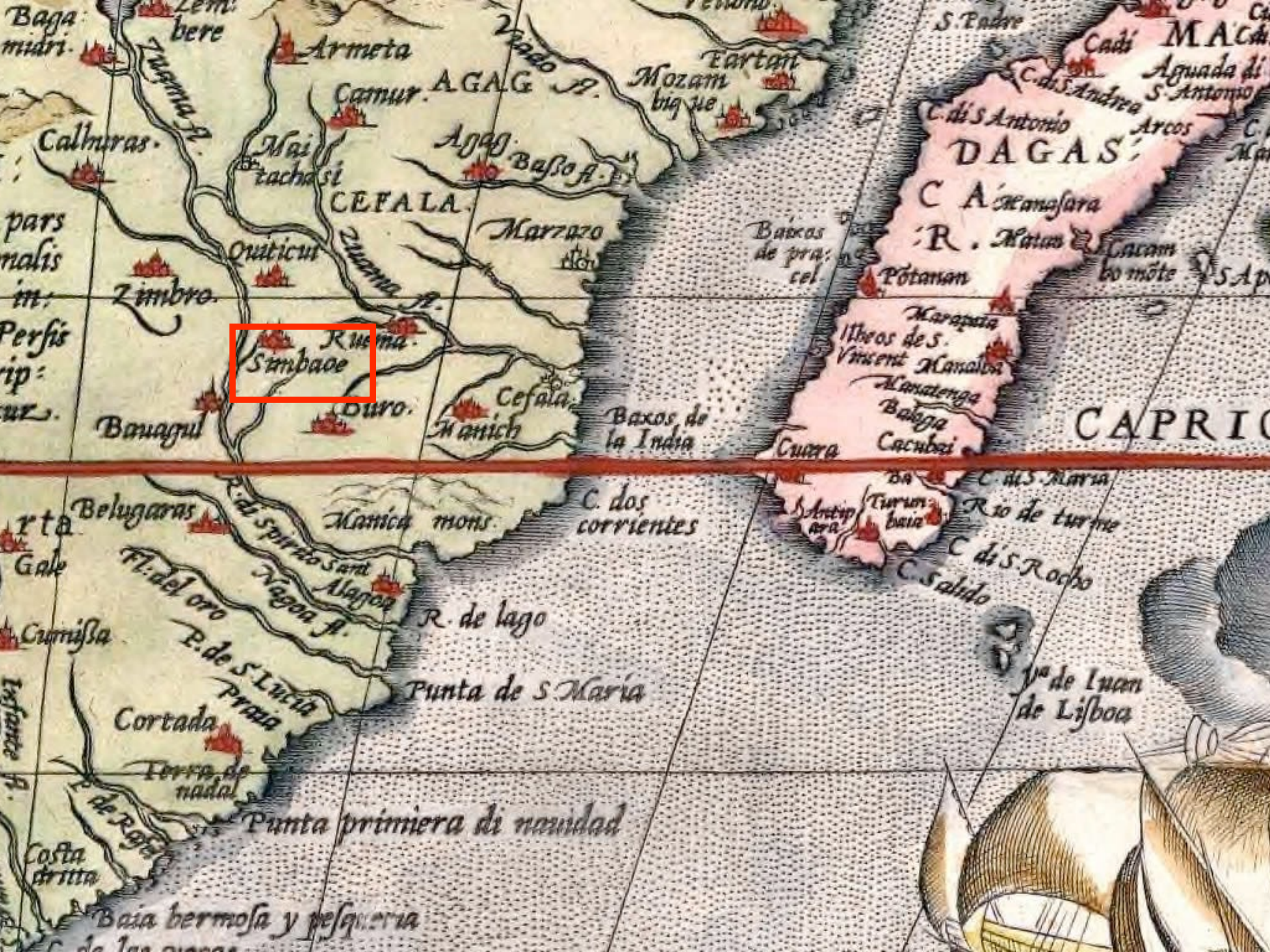
"The natives of the country call these edifices Symbaoe, which according to their language signifies court."

ABRAHAM ORTELIUS

1570

AFRICAЕ TABLUA NOVA







C. THE GREAT ZIMBABWE, ANCIENT RUINS.

Copyright
Smart & Co.

WHO?

WHEN?

WHAT?

- ① **PHOENECIANS**
- ② **ARABS**
- ③ **QUEEN OF SHEBA**

① PHOENECIANS

② ARABS

③ QUEEN OF SHEBA



① PHOENECIANS

② ARABS

③ QUEEN OF SHEBA

- ① PHOENECIANS
- ② ARABS
- ③ QUEEN OF SHEBA

ABSOLUTELY, DEFINITELY NOT SUB-SAHARAN

AFRICANS



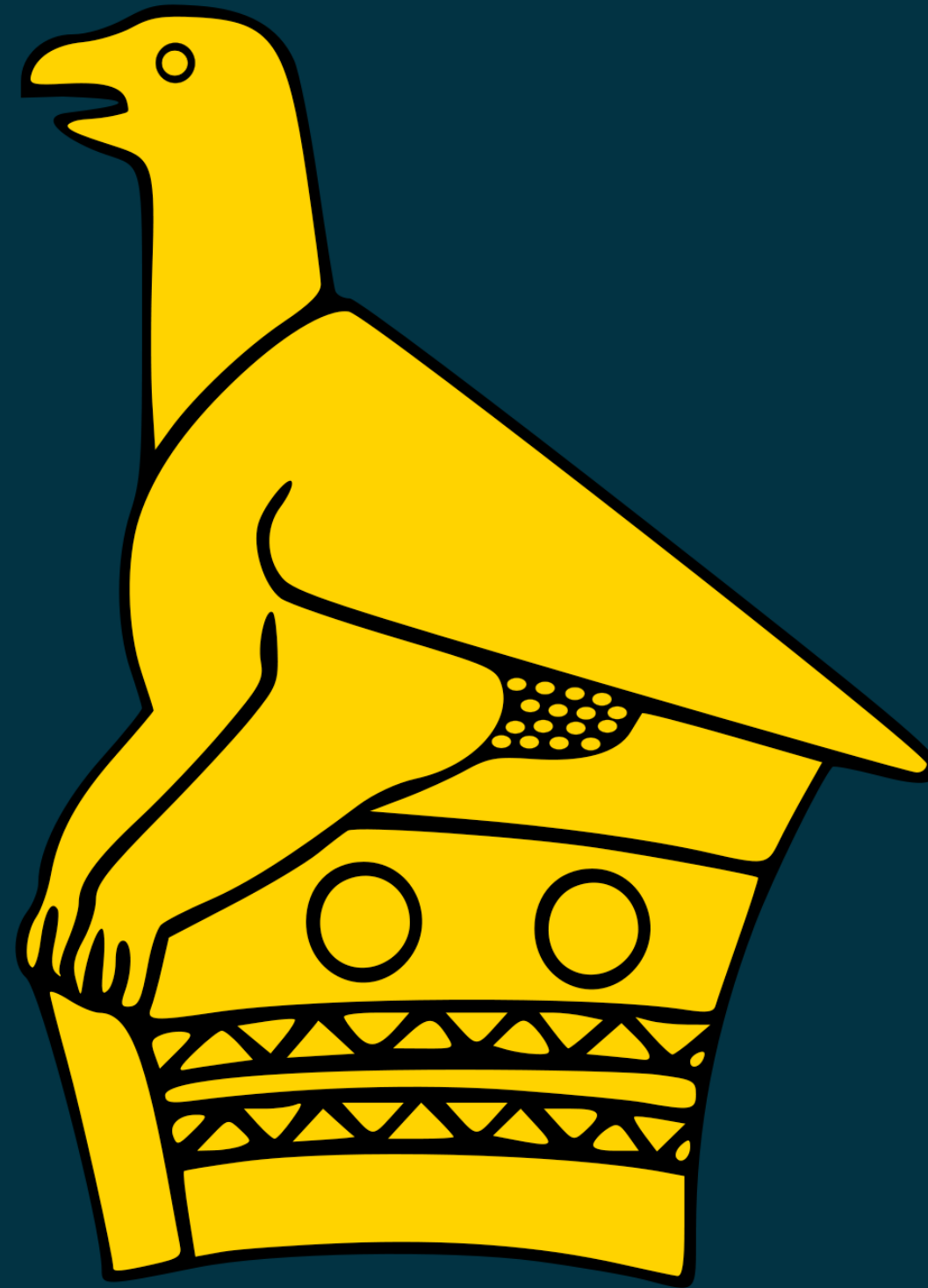
- ① **4TH CENTURY AD: REGION IS FIRST SETTLED**
- ② **4TH-7TH CENTURIES AD: FARMING & IRON WORKING**
- ③ **1000-1200 AD: INITIAL CONSTRUCTION**
- ④ **1200-1450/1500 AD: KINGDOM OF ZIMBABWE**

- ① **4TH CENTURY AD: REGION IS FIRST SETTLED**
- ② 4TH-7TH CENTURIES AD: FARMING & IRON WORKING
- ③ 1000-1200 AD: INITIAL CONSTRUCTION
- ④ 1200-1450/1500 AD: KINGDOM OF ZIMBABWE

- ① 4TH CENTURY AD: REGION IS FIRST SETTLED
- ② 4TH-7TH CENTURIES AD: FARMING & IRON WORKING
- ③ 1000-1200 AD: INITIAL CONSTRUCTION
- ④ 1200-1450/1500 AD: KINGDOM OF ZIMBABWE

- ① 4TH CENTURY AD: REGION IS FIRST SETTLED
- ② 4TH-7TH CENTURIES AD: FARMING & IRON WORKING
- ③ **1000-1200 AD: INITIAL CONSTRUCTION**
- ④ 1200-1450/1500 AD: KINGDOM OF ZIMBABWE

- ① 4TH CENTURY AD: REGION IS FIRST SETTLED
- ② 4TH-7TH CENTURIES AD: FARMING & IRON WORKING
- ③ 1000-1200 AD: INITIAL CONSTRUCTION
- ④ 1200-1450/1500 AD: KINGDOM OF ZIMBABWE



KINGDOM OF ZIMBABWE

① CA. AD 1200-1450/1500

② LARGEST OF THE PRE-COLONIAL STATES IN SOUTHERN AFRICA

③ FOUNDED BY EMIGRANTS FROM THE KINGDOM OF MAPUNGUBWE

④ SHONA SPEAKERS (BANTU DIALECT)

- ① CA. AD 1200-1450/1500
- ② **LARGEST OF THE PRE-COLONIAL STATES IN SOUTHERN AFRICA**
- ③ **FOUNDED BY EMIGRANTS FROM THE KINGDOM OF MAPUNGUBWE**
- ④ **SHONA SPEAKERS (BANTU DIALECT)**

SOUTHERN AFRICA

A map of the Southern Africa region, showing the outlines of the countries. The map is set against a light gray background with a white grid of latitude and longitude lines. The countries labeled are Angola, Zambia, Namibia, Botswana, South Africa, Malawi, Mozambique, and Zimbabwe. Each country name is in a black box with white text, and a red dot is placed within each country's border.

ANGOLA

MALAWI

ZAMBIA

MOZAMBIQUE

ZIMBABWE

NAMIBIA

BOTSWANA

SOUTH AFRICA



GREAT ZIMBABWE

- ① CA. AD 1200-1450/1500
- ② LARGEST OF THE PRE-COLONIAL STATES IN SOUTHERN AFRICA
- ③ **FOUNDED BY IMMIGRANTS FROM THE KINGDOM OF MAPUNGUBWE**
- ④ SHONA SPEAKERS (BANTU DIALECT)

MAPUNGUBWE HILL

AD 1075–1220



- ① CA. AD 1200-1450/1500
- ② LARGEST OF THE PRE-COLONIAL STATES IN SOUTHERN AFRICA
- ③ FOUNDED BY EMIGRANTS FROM THE KINGDOM OF MAPUNGUBWE
- ④ SHONA SPEAKERS (BANTU DIALECT)

SHONA

Bantu language commonly spoken in Zimbabwe and southern Zambia. Shona language dialects include Zezuru, Karanga, Manyika, Ndau and Korekore

Dzimba-dza-mabwe

Translated from the Karanga dialect of Shona as "large houses of stone"

Dzimba-hwe

Translated from the Zezuru dialect of Shona as "venerated houses." Usually applied to the houses or graves of chiefs

ZIMBABWE

GREAT ZIMBABWE



GREAT ZIMBABWE





ZIWA

KHAMI



DANAMOMBE



ZIMBABWE

Center of power for royalty and elite. Physical residence for royalty. Hub of economic system and activity (trade and taxation).

An aerial photograph of the Great Zimbabwe ruins in Zimbabwe. The image shows a large, circular stone wall (the Great Enclosure) in the center, surrounded by a grassy field with scattered trees. In the background, there are rolling hills covered in dense green vegetation and large, rounded boulders. The sky is clear and blue.

GREAT ZIMBABWE

DECLINE AND COLLAPSE

AD 1450 : GREAT ZIMBABWE DECLINE

- ① WATER SHORTAGES & FAMINE (CLIMATE CHANGE)
- ② POLITICAL INSTABILITY
- ③ SHIFTING TRADE NETWORKS

AD 1450 : GREAT ZIMBABWE DECLINE

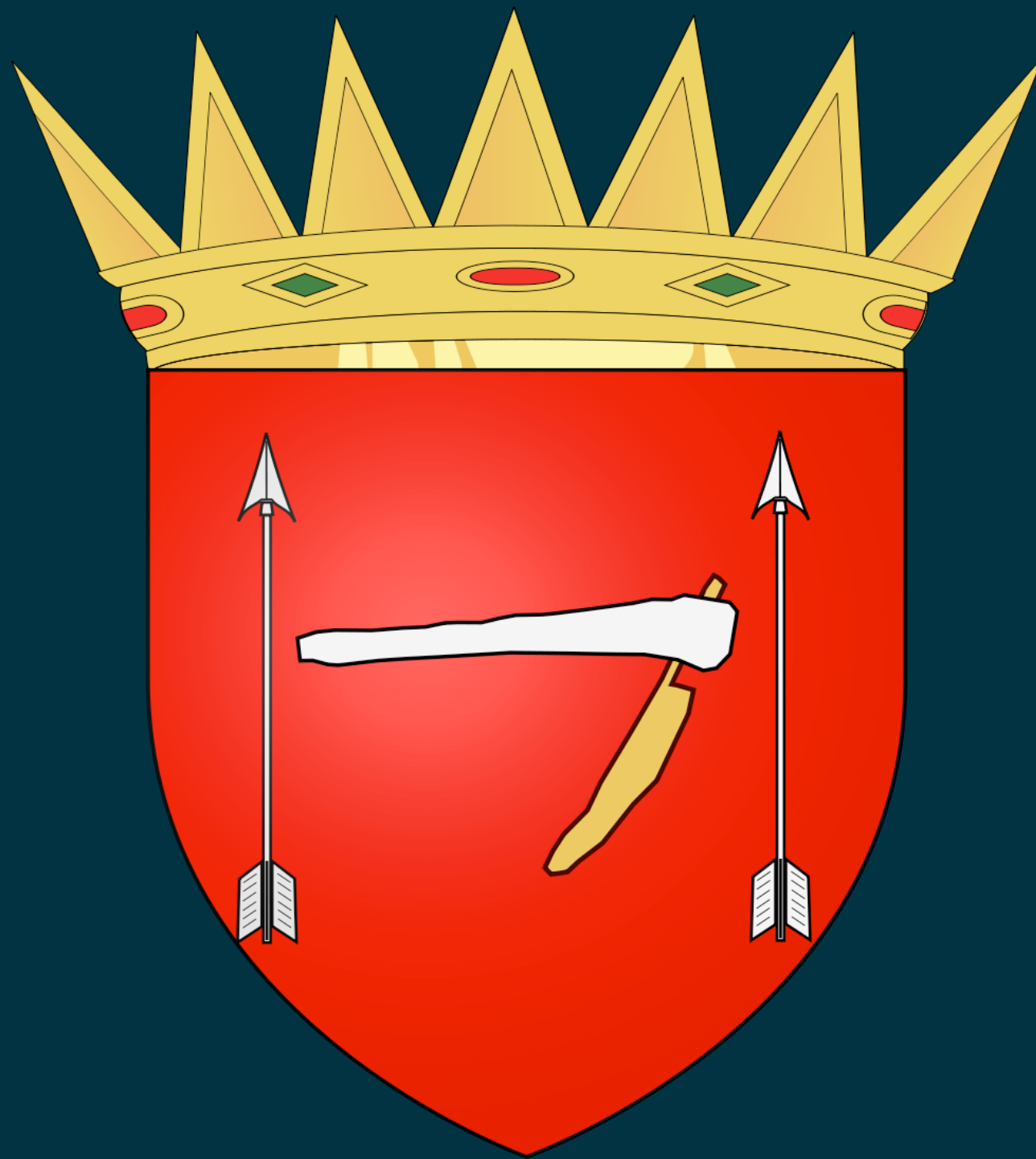
- ① WATER SHORTAGES & FAMINE (CLIMATE CHANGE)**
- ② POLITICAL INSTABILITY
- ③ SHIFTING TRADE NETWORKS

AD 1450 : GREAT ZIMBABWE DECLINE

- ① WATER SHORTAGES & FAMINE (CLIMATE CHANGE)
- ② **POLITICAL INSTABILITY**
- ③ SHIFTING TRADE NETWORKS

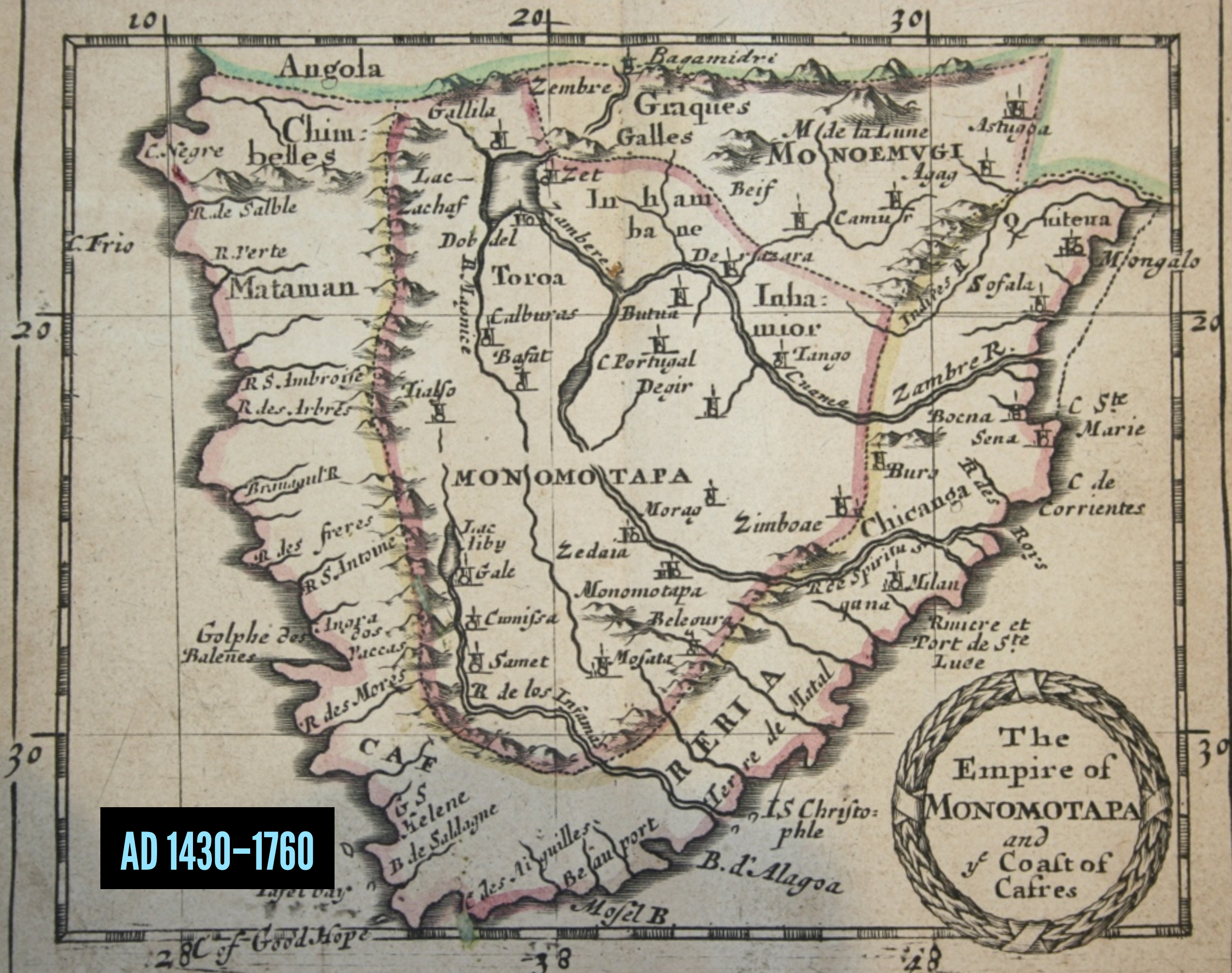
AD 1450 : GREAT ZIMBABWE DECLINE

- ① WATER SHORTAGES & FAMINE (CLIMATE CHANGE)
- ② POLITICAL INSTABILITY
- ③ SHIFTING TRADE NETWORKS



KINGDOM OF MUTAPA

AD 1430-1760





THE END