

A person is kneeling in a muddy, rocky environment, possibly a construction site or a field of debris. The person is wearing a blue long-sleeved shirt and dark pants. The ground is dark and uneven, with some wooden sticks or debris scattered around. The overall scene suggests a state of distress or a difficult situation.

**HOAXING**

**HUMAN**

**ORIGINS**

**① PILTDOWN MAN**

**② CARDIFF GIANT**

**① PILTDOWN MAN**

**② CARDIFF GIANT**

setting the stage...

# THE 19TH CENTURY EVOLUTIONARY CONTEXT

# JAMES USHER



# 1650

*Annales Veteris Testamenti, a prima mundi origine deducti, una cum rerum Asiaticarum et Aegyptiacarum chronico, a temporis historici principio usque ad Maccabaicorum initia producto.*

("Annals of the Old Testament, deduced from the first origins of the world, the chronicle of Asiatic and Egyptian matters together produced from the beginning of historical time up to the beginnings of Maccabees")

**23 OCTOBER**

**4004 BC**

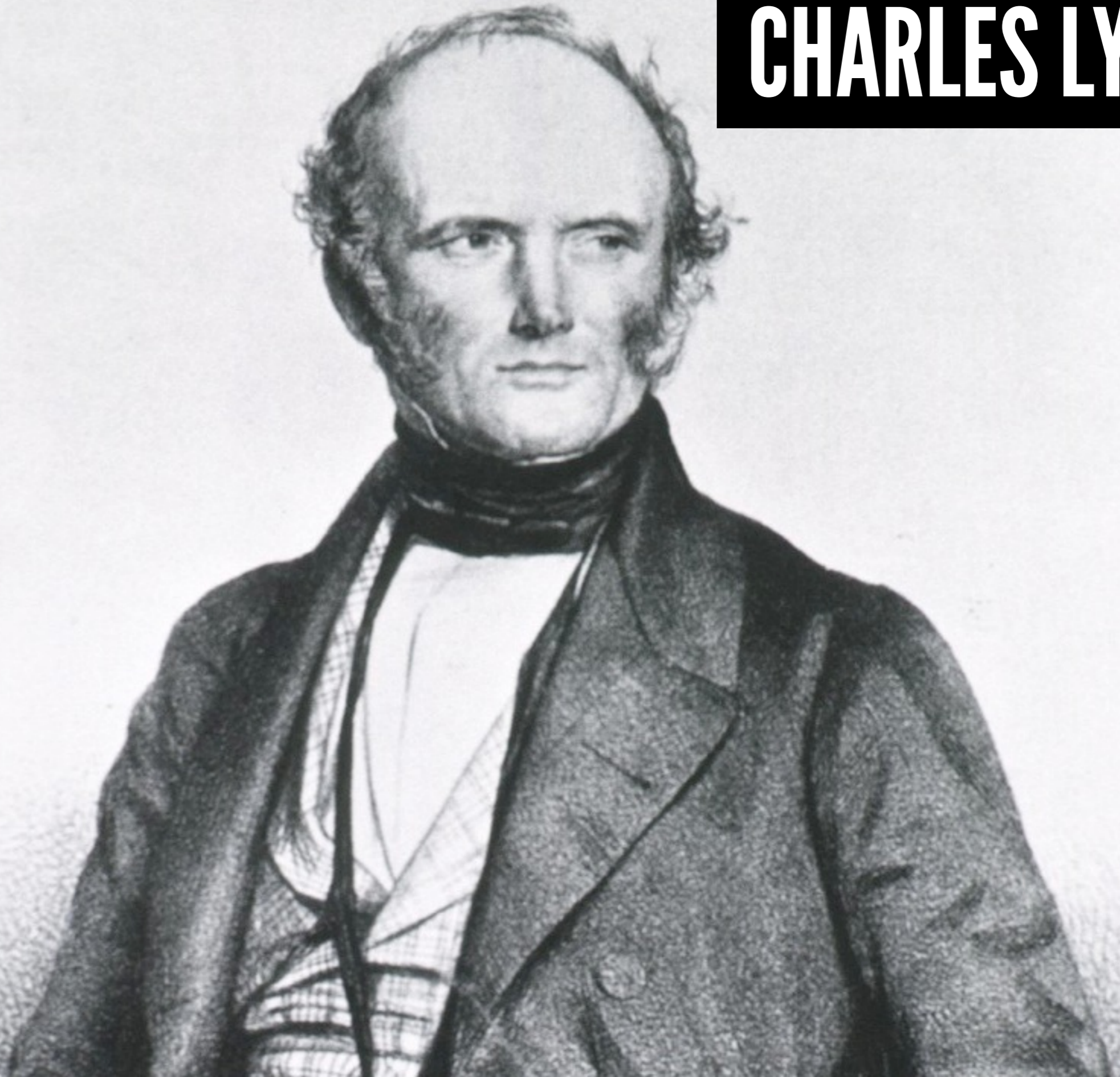
**(a Sunday, just in case you wanted to know)**

# GEOLOGY





**CHARLES LYELL**



# UNIFORMITARIANISM

The idea that the same natural laws operate today as in the past; the earth was shaped entirely by slow-moving forces still in operation today, acting over a very long period of time



**PALEONTOLOGY**

# PALAEOZOIC OR PRIMARY

PERMIAN	Magnesian Limestone	300	Thin beds of Limestone slightly magnesian, and a white Marl with coprolites. White yellow & red -ish Magnesian Limestone in thick beds, and Marls.
	Lower Red Sandstone		A variable series of Sands, Sandstones & Gyps of irregular thickness & various colours.
CARBONIFEROUS	Coal Measures	1000	Layers & beds of Coal, alternating with Shale, Clay & Sandstone, & layers of Argillaceous Iron-ore, a few Shells & abundance of Plants, and Cryptogamiae.
	Millstone Grit		Coarse & fine Gritstones occasionally with Coal and thin seams of Limestone.
CARBONIFEROUS	Carboniferous or Mountain Limestone, and Carboniferous Shale	1100	Generally greyish, compact or crystalline forming an extremely thick bed. The upper portion, in the N. of England, alternating with Shale, Sandstone & Coal. Abounding in Corallina, Echinites and Shells.
	Old Red Conglomerate & Sandstone, Cornstone, Slate, Marl, Flintstone, &c.		2500
SILURIAN	Upper Ludlow Rock, Amnecy Limestone, Lower Ludlow Rock, Winslock, or Dudley Limestone and Shale, May Hill Sandstone	2600	Micaceous grey Sandstone, Limestone, argillaceous and somewhat crystalline, distinguished by abundance of Pentamerus Knightii.
	Cardo Sandstone, Bala Limestone, Llanblethel Flags, Lincolnia Beds, Slates & Grits		26,000 26,000



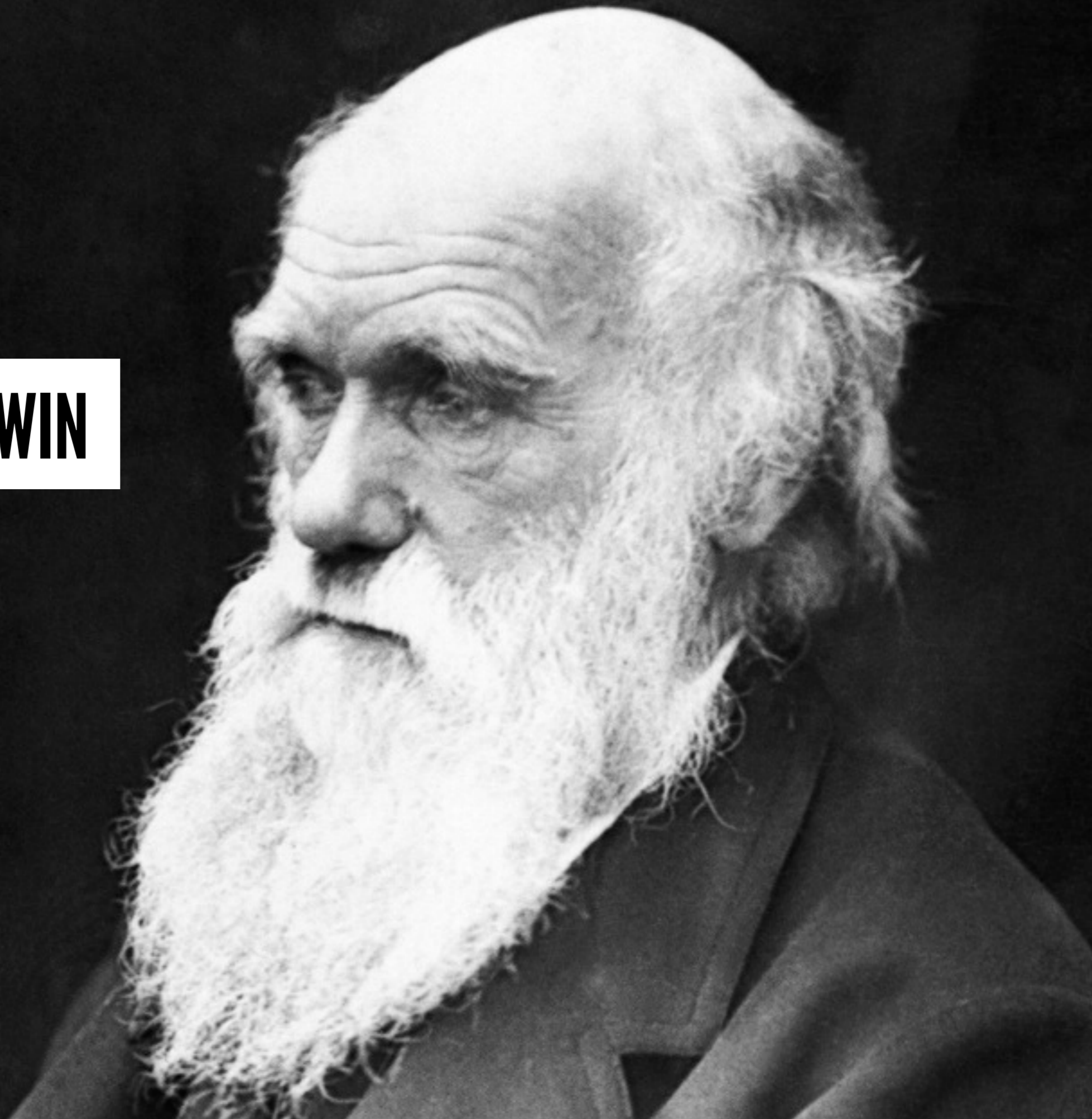
The chief object in this Table has been to give figures of such Plants, Shells, &c. as are thus exhibiting the characteristic features of organic life existing at successive periods.



**NATURAL**

**WORLD**

**CHARLES DARWIN**



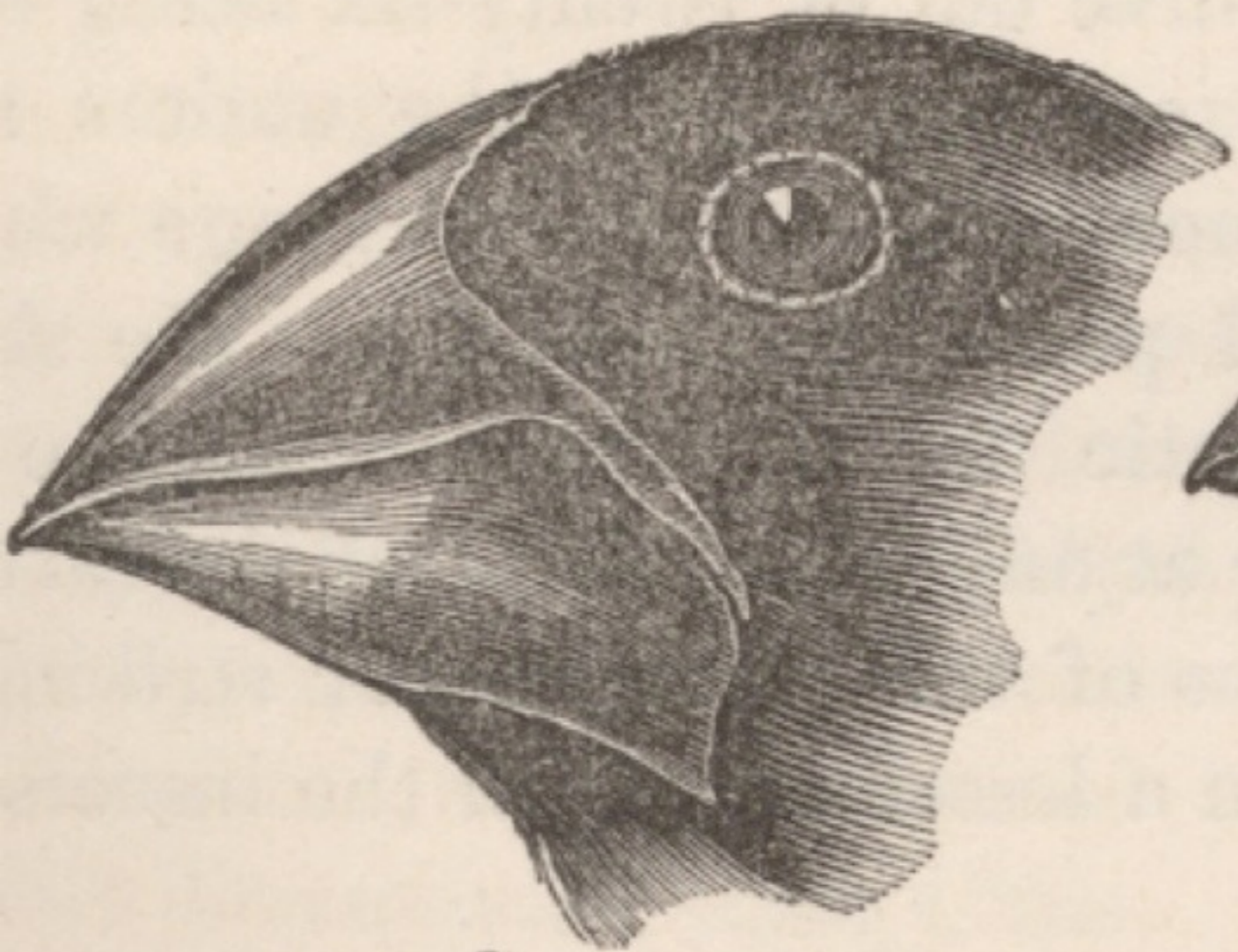
# H.M.S. BEAGLE



# GALAPAGOS ISLANDS



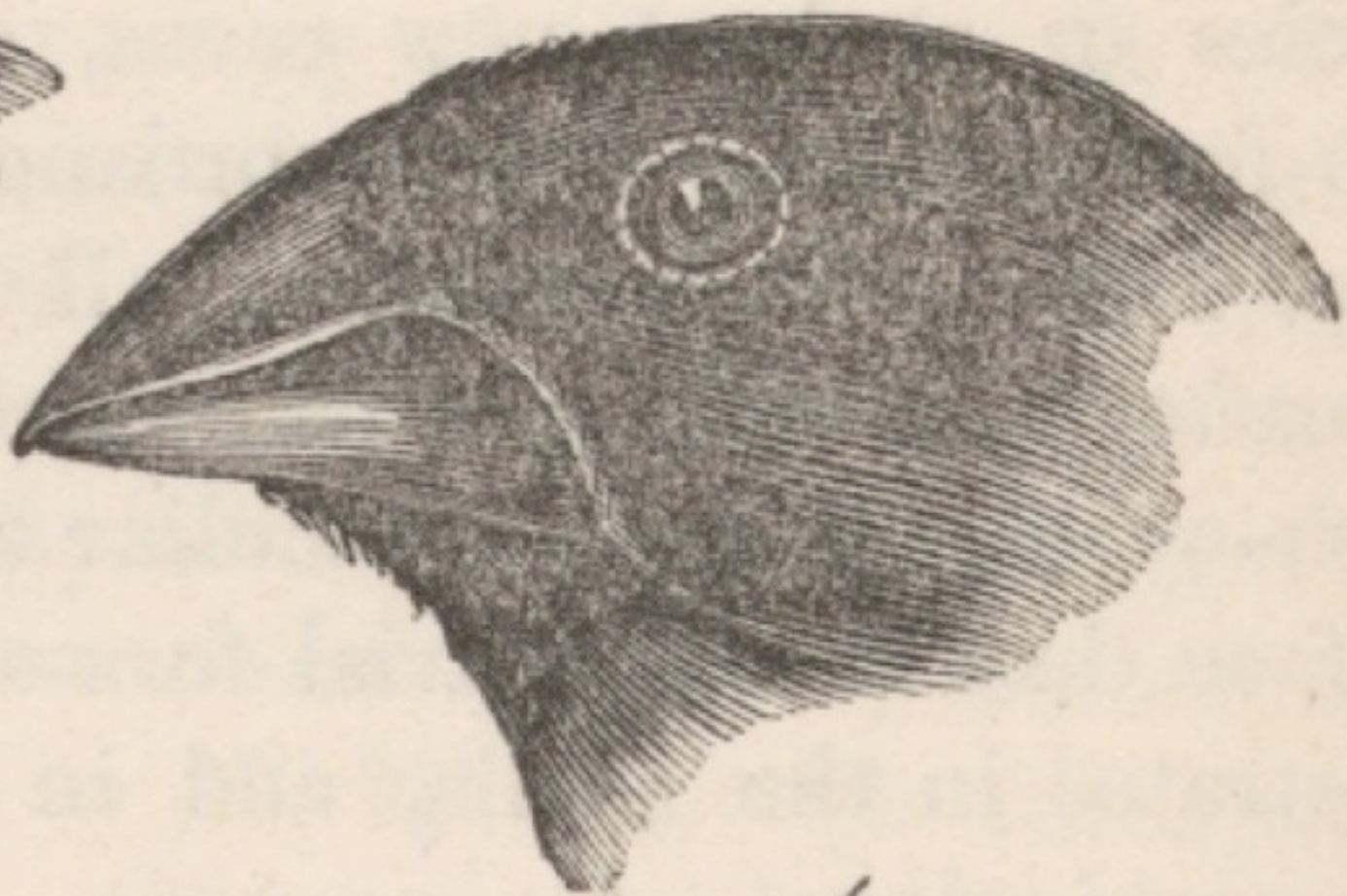




3



1. *Geospiza magnirostris*.



4



2. *Geospiza fortis*.

# THE ORIGIN OF SPECIES

BY MEANS OF NATURAL SELECTION,

OR THE

PRESERVATION OF FAVOURED RACES IN THE STRUGGLE  
FOR LIFE.

By CHARLES DARWIN, M.A.,

FELLOW OF THE ROYAL, GEOLOGICAL, LINNÆAN, ETC., SOCIETIES;  
AUTHOR OF 'JOURNAL OF RESEARCHES DURING H. M. S. BEAGLE'S VOYAGE  
ROUND THE WORLD.'

A black and white portrait of a man with dark, wavy hair, wearing a dark coat with a high, patterned collar. The man is looking slightly to the right of the viewer. The background is plain and light-colored.

**BOUCHER DE PERTHES**

(1788 –1868)

# BOUCHER DE PERTHES

- ★ LEISURE TIME SPENT STUDYING ARCHAEOLOGY & PALEONTOLOGY OF SOMME AREA OF FRANCE
- ★ *ANTIQUITÉS CELTIQUES ET ANTÉDILUVIENNES* (1847)
- ★ ESTABLISHED A MUCH DEEPER SENSE OF TIME - COUNTER TO USHER CHRONOLOGY



*Un chapeau  
les ables des  
hautes terres  
en y rochers  
etable garnis  
des de la  
effets en l'air  
de la*



1

Edouard et Louis LARTET  
COLLECTIONS  
No 436  
DU CAT. SPÉCIAL

PRE.2010.0.99.1











1

ENGLAND WAS THE ONLY MAJOR EUROPEAN NATION THAT DIDN'T HAVE A SIGNIFICANT HUMAN FOSSIL FIND

2

FINDS DIDN'T LINE UP WITH THE "BRAIN CENTERED" PERSPECTIVE OF HUMAN EVOLUTION

**1**

**ENGLAND WAS THE ONLY MAJOR EUROPEAN NATION THAT DIDN'T  
HAVE A SIGNIFICANT HUMAN FOSSIL FIND**

**2**

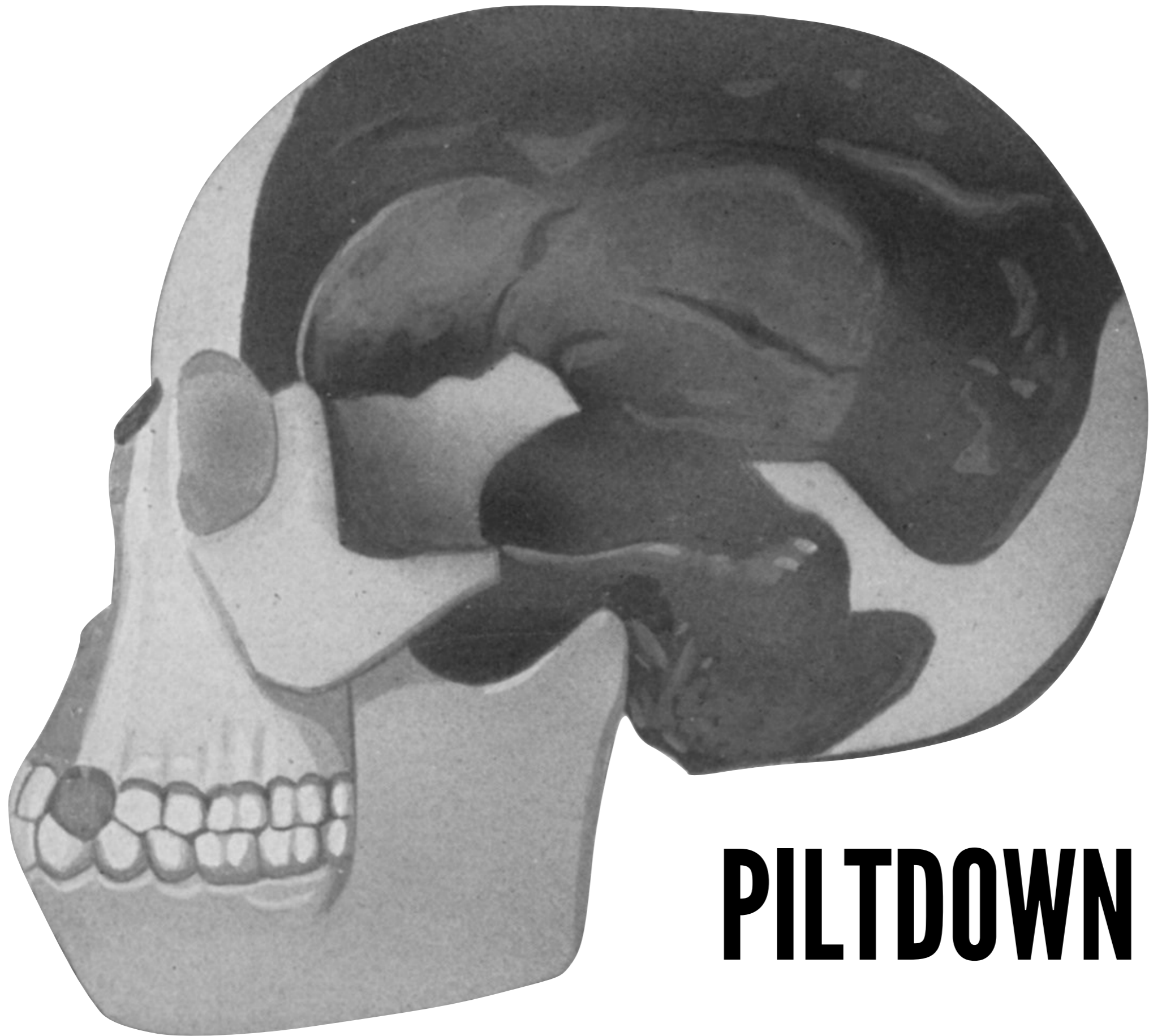
**FINDS DIDN'T LINE UP WITH THE "BRAIN CENTERED" PERSPECTIVE  
OF HUMAN EVOLUTION**

1

ENGLAND WAS THE ONLY MAJOR EUROPEAN NATION THAT DIDN'T HAVE A SIGNIFICANT HUMAN FOSSIL FIND

2

FINDS DIDN'T LINE UP WITH THE "BRAIN CENTERED" PERSPECTIVE OF HUMAN EVOLUTION



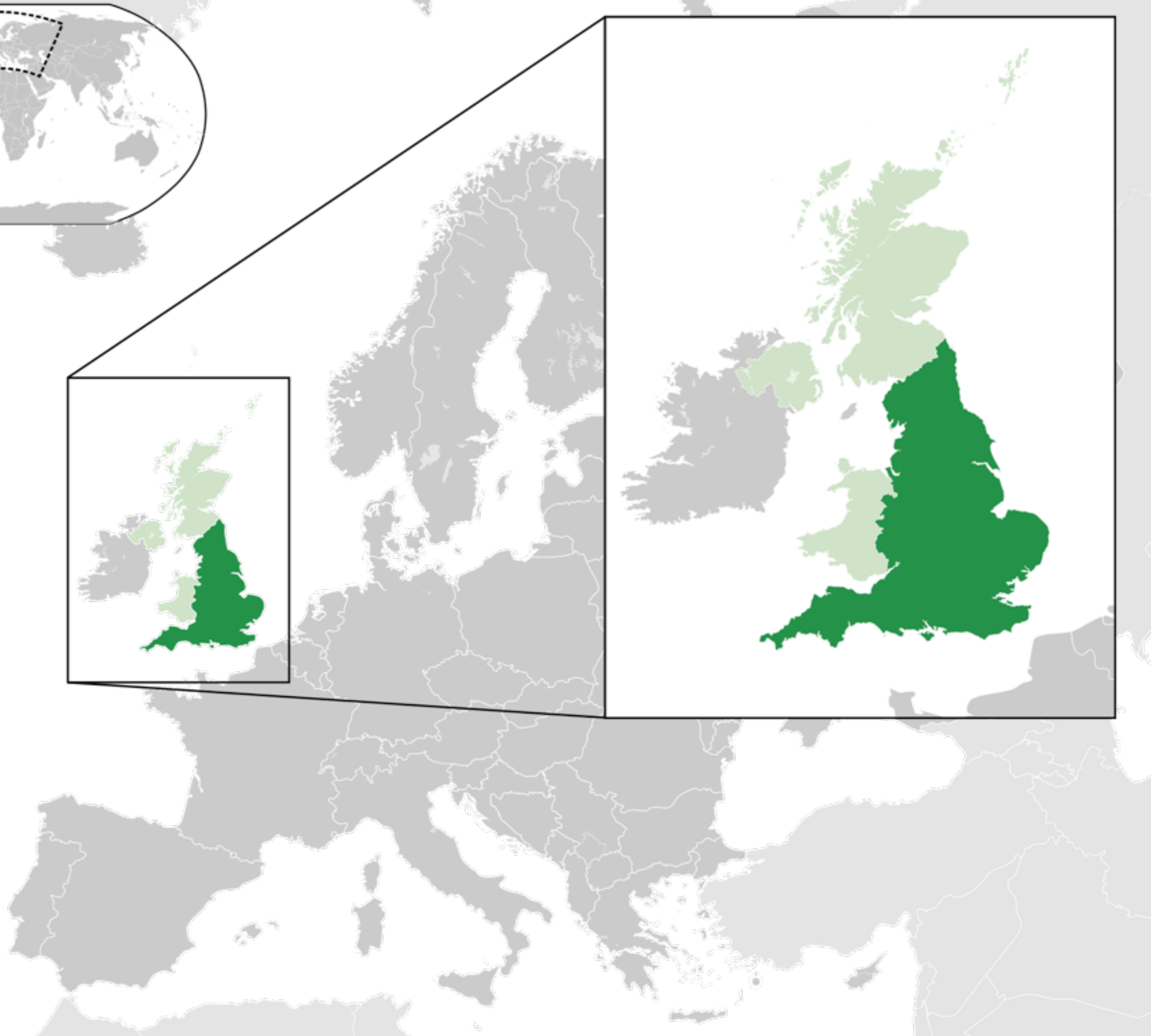
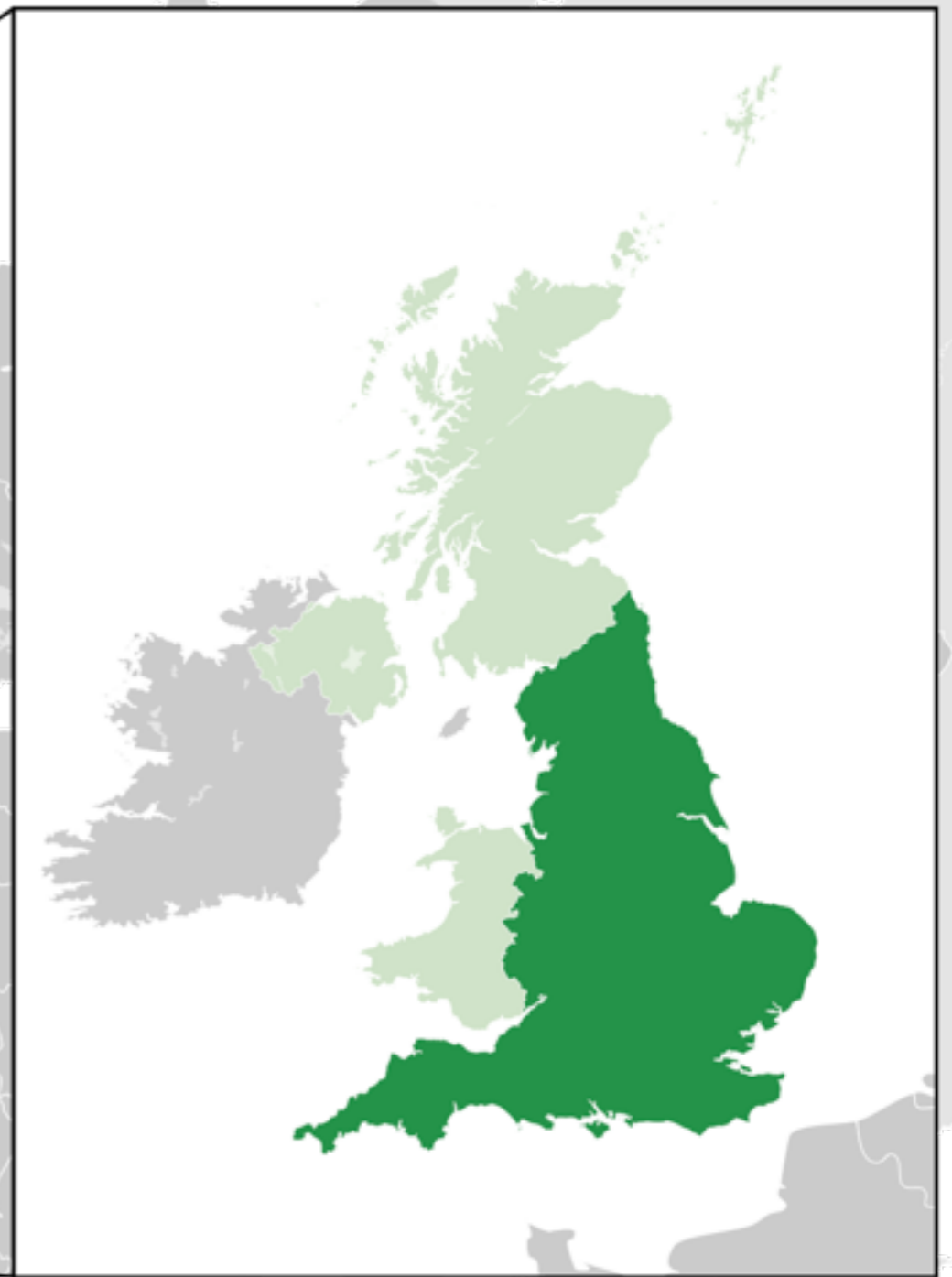
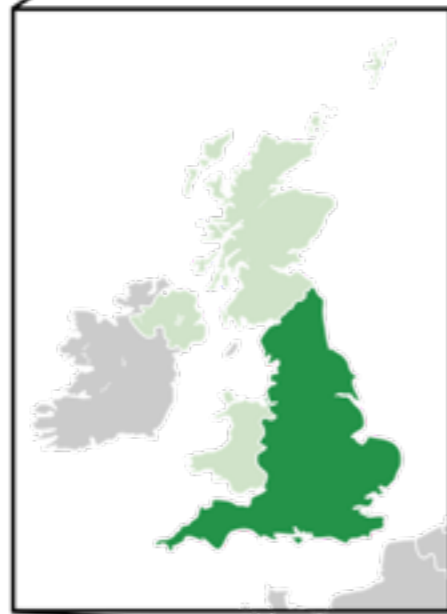
**PILTDOWN MAN**

# PILTDOWN DISCOVERY

- ★ IN 1908, A SKULL FRAGMENT DISCOVERED NEAR THE BARCOMBE MANOR IN THE PILTDOWN REGION OF SUSSEX
- ★ IN 1911, 4 MORE CRANIAL FRAGMENTS (PLUS FOSSIL ANIMAL BONES AND TOOTH)
- ★ IN 1912, A PARTIALLY INTACT MANDIBLE IS DISCOVERED

# PILTDOWN DISCOVERY

- ★ IN 1908, A SKULL FRAGMENT DISCOVERED NEAR THE BARCOMBE MANOR IN THE PILTDOWN REGION OF SUSSEX
- ★ IN 1911, 4 MORE CRANIAL FRAGMENTS (PLUS FOSSIL ANIMAL BONES AND TOOTH)
- ★ IN 1912, A PARTIALLY INTACT MANDIBLE IS DISCOVERED







**PILTDOWN DISCOVERY**



DAWSON



**DAWSON**

**WOODWARD**

# PILTDOWN DISCOVERY

- ★ IN 1908, A SKULL FRAGMENT DISCOVERED NEAR THE BARCOMBE MANOR IN THE PILTDOWN REGION OF SUSSEX
- ★ IN 1911, 4 MORE CRANIAL FRAGMENTS (PLUS FOSSIL ANIMAL BONES AND TOOTH)
- ★ IN 1912, A PARTIALLY INTACT MANDIBLE IS DISCOVERED

# PILTDOWN DISCOVERY

- ★ IN 1908, A SKULL FRAGMENT DISCOVERED NEAR THE BARCOMBE MANOR IN THE PILTDOWN REGION OF SUSSEX
- ★ IN 1911, 4 MORE CRANIAL FRAGMENTS (PLUS FOSSIL ANIMAL BONES AND TOOTH)
- ★ IN 1912, A PARTIALLY INTACT MANDIBLE IS DISCOVERED

**PILTDOWN DATES**  
**500,000 YEARS OLD**

**“MISSING LINK”**

**BRAIN CENTERED THEORY**

**SO WHAT?**



**1**

**ENGLAND WAS THE ONLY MAJOR EUROPEAN NATION THAT DIDN'T  
HAVE A SIGNIFICANT HUMAN FOSSIL FIND**

**2**

**FINDS DIDN'T LINE UP WITH THE "BRAIN CENTERED" PERSPECTIVE  
OF HUMAN EVOLUTION**

# BRITISH MUSEUM



10736. - LONDON BRITISH MUSEUM.





# FURTHER DISCOVERIES

- ★ IN 1913, RIGHT CANINE FOUND (THOUGHT TO BE FROM ORIGINAL MANDIBLE)
- ★ IN 1914, STONE TOOLS & A CARVED BONE ARTIFACT (IMMEDIATELY CALLED THE “CRICKET BAT”) FOUND
- ★ IN 1915, FRAGMENTS OF 2ND SKULL FOUND 2 MILES FROM PILTDOWN - DUBBED PILTDOWN II

# FURTHER DISCOVERIES

- ★ IN 1913, RIGHT CANINE FOUND (THOUGHT TO BE FROM ORIGINAL MANDIBLE)
- ★ IN 1914, STONE TOOLS & A CARVED BONE ARTIFACT (IMMEDIATELY CALLED THE “CRICKET BAT”) FOUND
- ★ IN 1915, FRAGMENTS OF 2ND SKULL FOUND 2 MILES FROM PILTDOWN - DUBBED PILTDOWN II

# FURTHER DISCOVERIES

- ★ IN 1913, RIGHT CANINE FOUND (THOUGHT TO BE FROM ORIGINAL MANDIBLE)
- ★ IN 1914, STONE TOOLS & A CARVED BONE ARTIFACT (IMMEDIATELY CALLED THE “CRICKET BAT”) FOUND
- ★ IN 1915, FRAGMENTS OF 2ND SKULL FOUND 2 MILES FROM PILTDOWN - DUBBED PILTDOWN II

# FURTHER DISCOVERIES

- ★ IN 1913, RIGHT CANINE FOUND (THOUGHT TO BE FROM ORIGINAL MANDIBLE)
- ★ IN 1914, STONE TOOLS & A CARVED BONE ARTIFACT (IMMEDIATELY CALLED THE “CRICKET BAT”) FOUND
- ★ IN 1915, FRAGMENTS OF 2ND SKULL FOUND 2 MILES FROM PILTDOWN - DUBBED PILTDOWN II



**EOANTHROPUS DAWSONI**

**“DAWSON’S DAWN MAN”**

# THE SKEPTICS

- ★ GERRIT S. MILLER (1915) OF THE SMITHSONIAN DID A DETAILED ANALYSIS OF THE REMAINS AND CONCLUDED THAT THE JAW WAS THAT OF AN APE
- ★ DAVID WATERSTON (1913), ANATOMY PROFESSOR AT KING'S COLLEGE (UNIVERSITY OF LONDON) THOUGHT THE MANDIBLE CAME FROM A CHIMP
- ★ FRANZ WEINDENREICH (1943), UNIVERSITY OF HEIDELBERG BELIEVED THAT PILTDOWN WAS THE COMBINATION OF A MODERN HUMAN CRANIA WITH AN ORANGUTAN MANDIBLE AND TEETH

# THE SKEPTICS

- ★ **GERRIT S. MILLER (1915)** OF THE SMITHSONIAN DID A DETAILED ANALYSIS OF THE REMAINS AND CONCLUDED THAT THE JAW WAS THAT OF AN APE
- ★ **DAVID WATERSTON (1913)**, ANATOMY PROFESSOR AT KING'S COLLEGE (UNIVERSITY OF LONDON) THOUGHT THE MANDIBLE CAME FROM A CHIMP
- ★ **FRANZ WEINDENREICH (1943)**, UNIVERSITY OF HEIDELBERG BELIEVED THAT PILTDOWN WAS THE COMBINATION OF A MODERN HUMAN CRANIA WITH AN ORANGUTAN MANDIBLE AND TEETH

# THE SKEPTICS

- ★ GERRIT S. MILLER (1915) OF THE SMITHSONIAN DID A DETAILED ANALYSIS OF THE REMAINS AND CONCLUDED THAT THE JAW WAS THAT OF AN APE
- ★ **DAVID WATERSTON (1913), ANATOMY PROFESSOR AT KING'S COLLEGE (UNIVERSITY OF LONDON) THOUGHT THE MANDIBLE CAME FROM A CHIMP**
- ★ FRANZ WEINDENREICH (1943), UNIVERSITY OF HEIDELBERG BELIEVED THAT PILTDOWN WAS THE COMBINATION OF A MODERN HUMAN CRANIA WITH AN ORANGUTAN MANDIBLE AND TEETH

# THE SKEPTICS

- ★ GERRIT S. MILLER (1915) OF THE SMITHSONIAN DID A DETAILED ANALYSIS OF THE REMAINS AND CONCLUDED THAT THE JAW WAS THAT OF AN APE
- ★ DAVID WATERSTON (1913), ANATOMY PROFESSOR AT KING'S COLLEGE (UNIVERSITY OF LONDON) THOUGHT THE MANDIBLE CAME FROM A CHIMP
- ★ **FRANZ WEINDENREICH (1943), UNIVERSITY OF HEIDELBERG BELIEVED THAT PILTDOWN WAS THE COMBINATION OF A MODERN HUMAN CRANIA WITH AN ORANGUTAN MANDIBLE AND TEETH**

# 1949

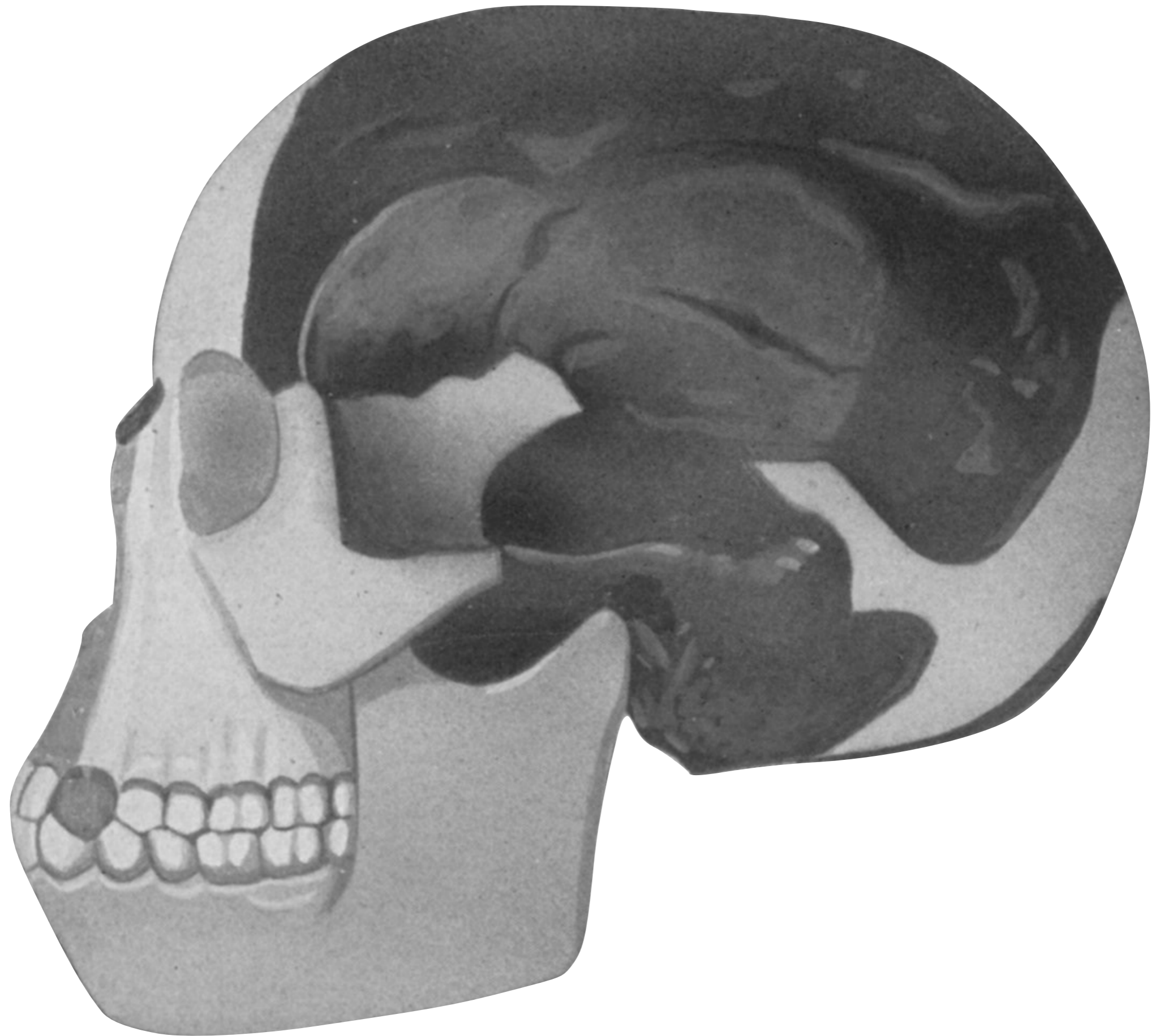
(yes, it seriously took that long for the hoax to be uncovered)

# 1949

initial fluorine dating showed that the remains were no more than 50,000 years old.

# 1953

more precise fluorine dating showed that the skull and the jaw were of completely different ages (and modern).





**WHO DONE IT?**





**KEITH** →



**WOODWARD**

DAWSON



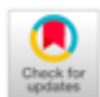
**WHO DONE IT?**

**(FOR REALZ)**

# ROYAL SOCIETY OPEN SCIENCE

Advanced

- Home
- Content
- Information for
- About us
- Sign up
- Submit



## New genetic and morphological evidence suggests a single hoaxer created 'Piltdown man'

Isabelle De Groote, Linus Girdland Flink, Rizwaan Abbas, Silvia M. Bello, Lucia Burgia, Laura Tabitha Buck, Christopher Dean, Alison Freyne, Thomas Higham, Chris G. Jones, Robert Kruszynski, Adrian Lister, Simon A. Parfitt, Matthew M. Skinner, Karolyn Shindler, Chris B. Stringer

Published 10 August 2016. DOI: 10.1098/rsos.160328

- Article
- Figures & Data
- Info & Metrics
- Review History
- PDF

< Previous

Next >

THIS ARTICLE HAS A CORRECTION. PLEASE SEE:

- Correction: Correction to 'New genetic and morphological evidence suggests a single hoaxer created 'Piltdown Man'' - October 1, 2016

### August 2016



- Table of Contents
- About the Cover
- Index by author
- Table of Contents (issuefull)

### Abstract

In 1912, palaeontologist Arthur Smith Woodward and amateur antiquarian

- ① **DNA SEQUENCING OF THE TEETH SUGGESTED THEY ALL CAME FROM THE SAME ORANGUTAN**
- ② **BONES ARE UNUSUALLY THICK - NOT OUTSIDE THE RANGE OF NORMAL HUMAN VARIATION.**
- ③ **UNDER CT, ALL BONES WERE COVERED WITH A STRANGE, OFF-WHITE PUTTY**



- ① DNA SEQUENCING OF THE TEETH SUGGESTED THEY ALL CAME FROM THE SAME ORANGUTAN**
- ② BONES ARE UNUSUALLY THICK - NOT OUTSIDE THE RANGE OF NORMAL HUMAN VARIATION.**
- ③ UNDER CT, ALL BONES WERE COVERED WITH A STRANGE, OFF-WHITE PUTTY**

- ① DNA SEQUENCING OF THE TEETH SUGGESTED THEY ALL CAME FROM THE SAME ORANGUTAN**
- ② BONES ARE UNUSUALLY THICK - NOT OUTSIDE THE RANGE OF NORMAL HUMAN VARIATION**
- ③ UNDER CT, ALL BONES WERE COVERED WITH A STRANGE, OFF-WHITE PUTTY**

- ① DNA SEQUENCING OF THE TEETH SUGGESTED THEY ALL CAME FROM THE SAME ORANGUTAN**
- ② BONES ARE UNUSUALLY THICK - NOT OUTSIDE THE RANGE OF NORMAL HUMAN VARIATION**
- ③ UNDER CT, ALL BONES WERE COVERED WITH A STRANGE, OFF-WHITE PUTTY**

**THE PUNCHLINE...**

DAWSON



# MOTIVATIONS



# NATIONALISM

The Piltdown finds put England “on the map” in terms of human evolution and paleoanthropology

# SCIENTIFIC IDEOLOGY

Supported the “brain centered” paradigm that most scientists believed in

# FAME

brought a great deal of notoriety to Dawson and Woodward



## NATIONALISM

The Piltdown finds put England “on the map” in terms of human evolution and paleoanthropology

## SCIENTIFIC IDEOLOGY

Supported the “brain centered” paradigm that most scientists believed in

## FAME

brought a great deal of notoriety to Dawson and Woodward

## NATIONALISM

The Piltdown finds put England “on the map” in terms of human evolution and paleoanthropology

## SCIENTIFIC IDEOLOGY

Supported the “brain centered” paradigm that most scientists believed in

## FAME

brought a great deal of notoriety to Dawson and Woodward

HERE  
RESTS THE BODY  
OF CHARLES  
DAVIDSON  
BORN 1840  
DIED 1910  
Aged 70 Years

RESTS THE BODY  
OF MARY  
DAVIDSON  
BORN 1845  
DIED 1905  
Aged 60 Years

RESTS THE BODY  
OF JOHN  
DAVIDSON  
BORN 1850  
DIED 1915  
Aged 65 Years

**SERIOUSLY**

**SO WHAT**



# BIG DADDY ?

J.T.C.

# PILTDOWN FORGERY!



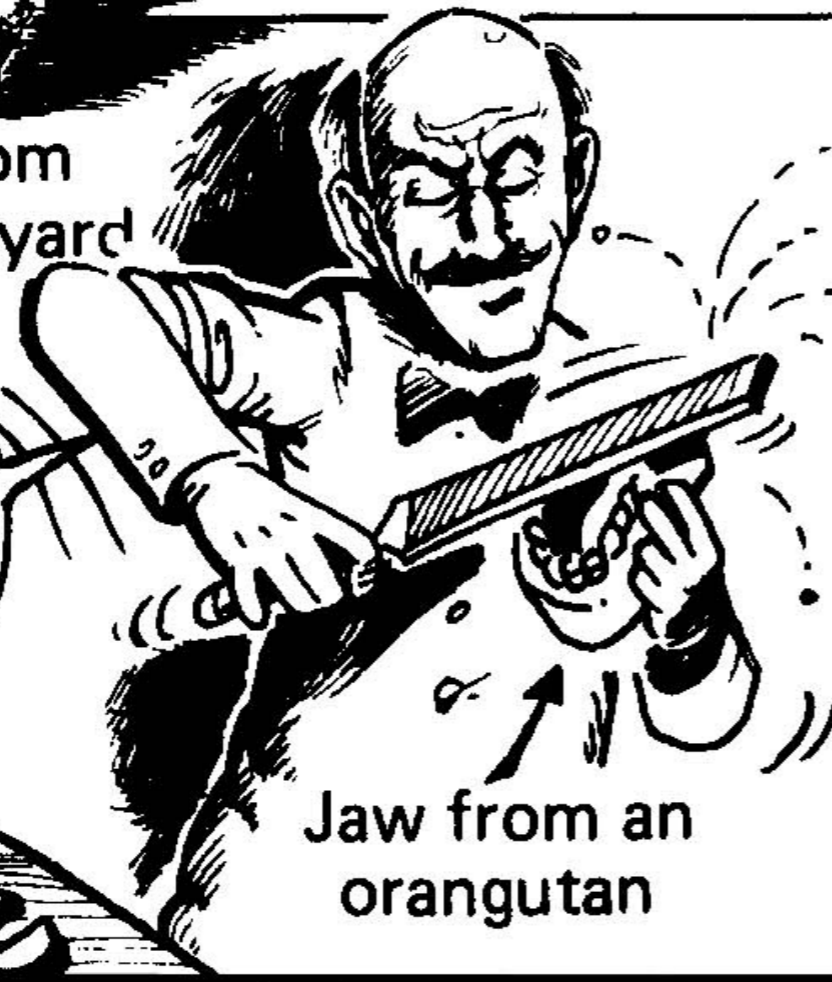
## CHARLES DAWSON

(1864–1916) In 1911-1912 Charles Dawson created and discovered the “missing link” that fooled the World for 40 years! – And sad to say, still does!

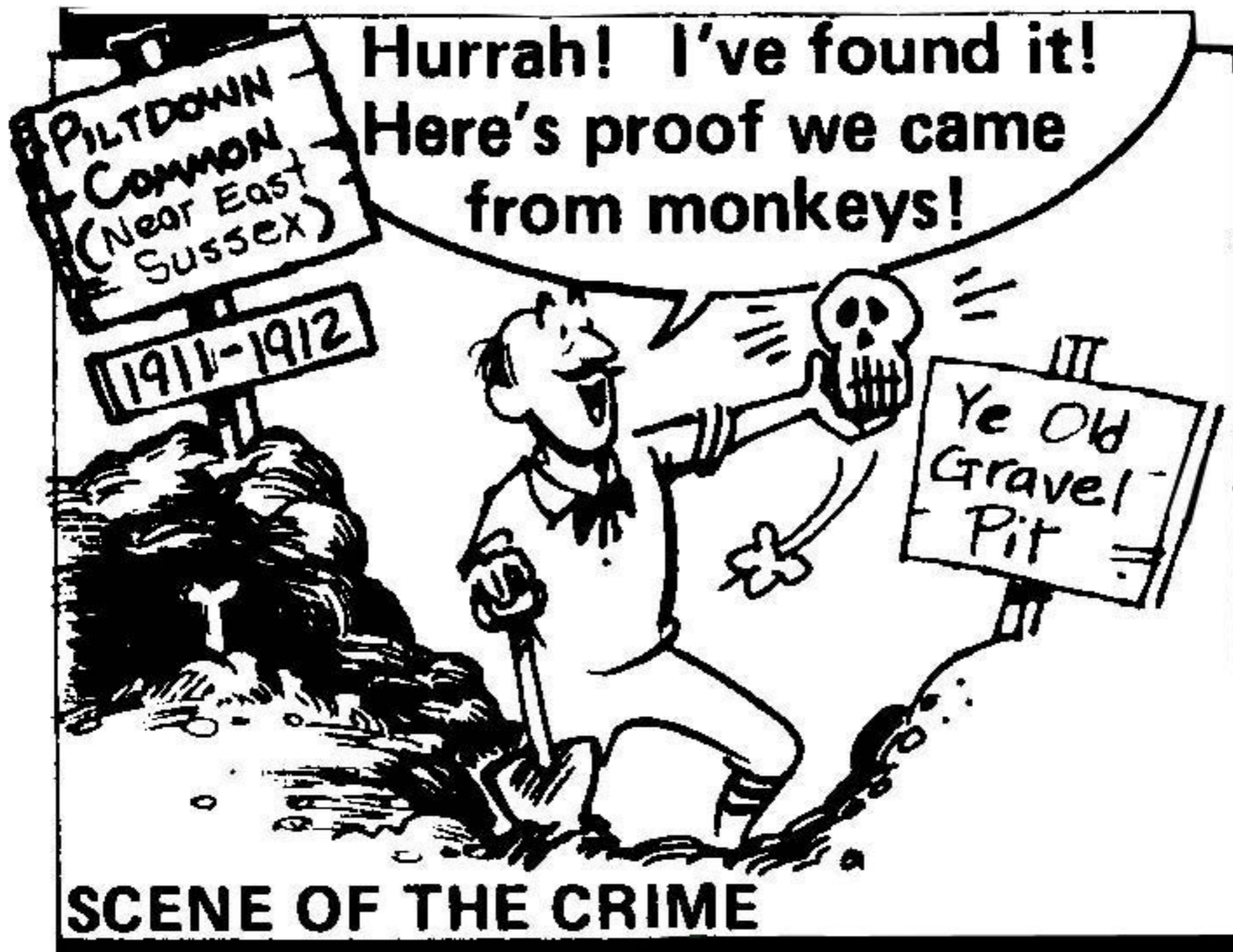


Skull taken from  
a Medieval graveyard

I'll file these  
teeth to make  
them look more  
like a human's.



Here are some  
chemicals to soak  
the bones in when  
you're done! It'll  
make them look  
really old and  
mineralised.



**SCENE OF THE CRIME**

1949 Kenneth  
Oakly

"IT'S A  
FAKE!!"



BUT! YEARS LATER!

This is a complete lie! These teeth have been filed to look human! The bones have been treated with chemicals to make them look old!

**WE'VE BEEN FOOLED!**



① PILTDOWN MAN

② CARDIFF GIANT

setting the stage...

**WHEN GIANTS WALKED THE EARTH**

*There were giants in the earth in those days; and also after that, when the sons of God came in unto the daughters of men, and they bare children to them, the same became mighty men which were of old, men of renown.*

(Genesis 6:4)

*Then a champion came out from the armies of the Philistines named Goliath, from Gath, whose height was six cubits and a span. He had a bronze helmet on his head, and he was clothed with scale-armor which weighed five thousand shekels of bronze. He also had bronze greaves on his legs and a bronze javelin slung between his shoulders. The shaft of his spear was like a weaver's beam, and the head of his spear weighed six hundred shekels of iron.*

*(1 Samuel 17: 4-7)*

*Only Og king of Bashan was left of the remnant of the Rephaites. His bed was made of iron and was more than thirteen feet long and six feet wide. It is still in Rabbah of the Ammonites.*

*(Deuteronomy 3:11)*



# THE CARDIFF GIANT



- ★ **“DISCOVERED” ON OCTOBER 16, 1869 IN CARDIFF, NEW YORK (SOUTH OF SYRACUSE)**
- ★ **“DISCOVERY” MADE ON FARM OF STUB NEWELL WHILE WORKMEN WERE DIGGING A WELL**
- ★ **“PETRIFIED” MAN OF OVER 10 FEET IN HEIGHT - WITH 21 INCH LONG FEET AND 3 FOOT WIDE SHOULDERS**

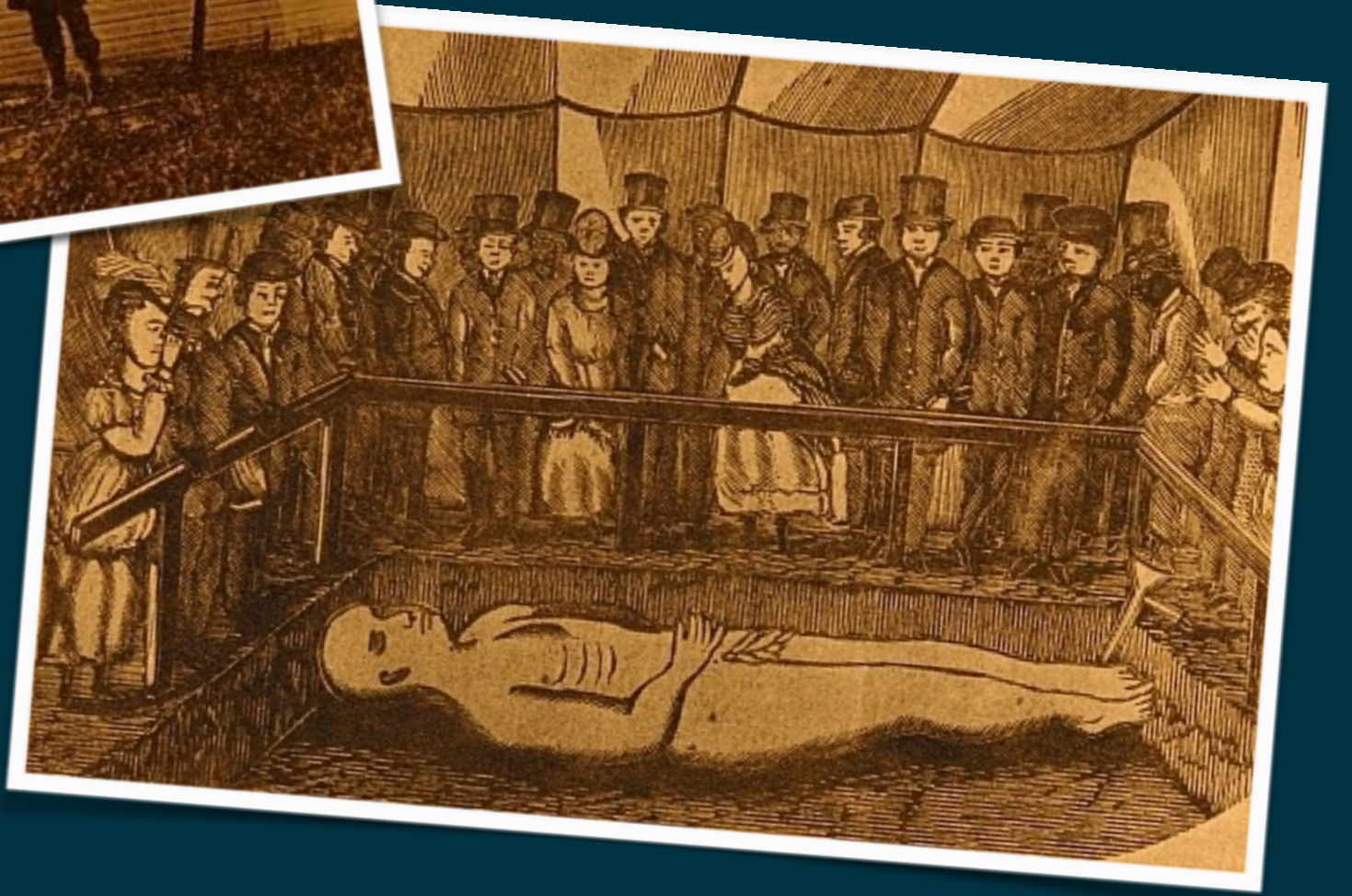


- ★ **“DISCOVERED” ON OCTOBER 16, 1869 IN CARDIFF, NEW YORK (SOUTH OF SYRACUSE)**
- ★ **“DISCOVERY” MADE ON FARM OF STUB NEWELL WHILE WORKMEN WERE DIGGING A WELL**
- ★ **“PETRIFIED” MAN OF OVER 10 FEET IN HEIGHT - WITH 21 INCH LONG FEET AND 3 FOOT WIDE SHOULDERS**

- ★ “DISCOVERED” ON OCTOBER 16, 1869 IN CARDIFF, NEW YORK (SOUTH OF SYRACUSE)
- ★ **“DISCOVERY” MADE ON FARM OF STUB NEWELL WHILE WORKMEN WERE DIGGING A WELL**
- ★ “PETRIFIED” MAN OF OVER 10 FEET IN HEIGHT - WITH 21 INCH LONG FEET AND 3 FOOT WIDE SHOULDERS

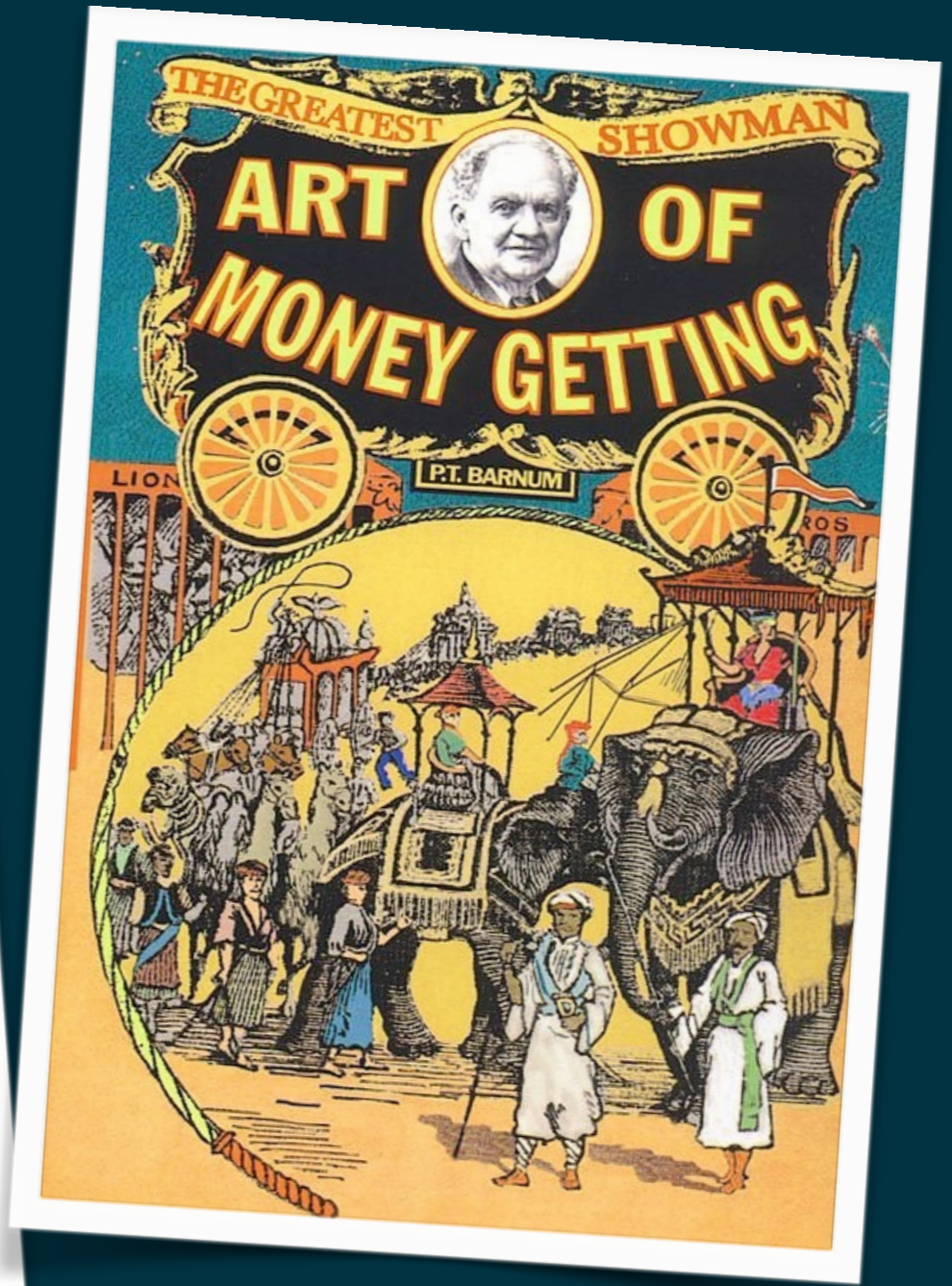
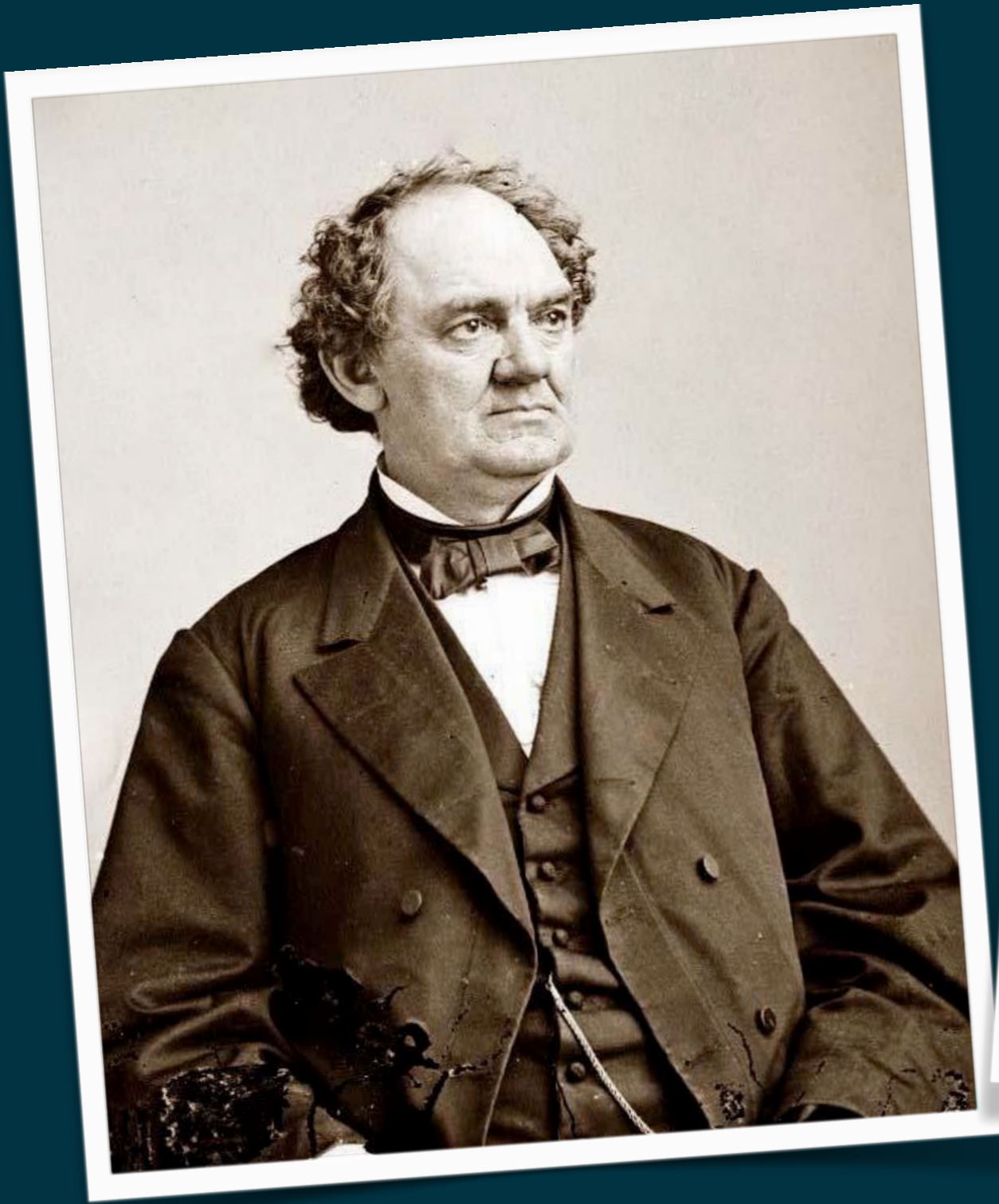
- ★ “DISCOVERED” ON OCTOBER 16, 1869 IN CARDIFF, NEW YORK (SOUTH OF SYRACUSE)
- ★ “DISCOVERY” MADE ON FARM OF STUB NEWELL WHILE WORKMEN WERE DIGGING A WELL
- ★ **“PETRIFIED” MAN OF OVER 10 FEET IN HEIGHT - WITH 21 INCH LONG FEET AND 3 FOOT WIDE SHOULDERS**







THE CARDIFF GIANT—SHIPMENT OF THE STATUE TO SYRACUSE.—[PHOTOGRAPHED BY C. O. GOTT.]



## **NOV 1, 1869 (SYRACUSE STANDARD)**

Daniel Luce reports of an extremely large wagon carrying a sizable and heavy load traveling towards Cardiff the previous year.

## **ITHACA DAILY JOURNAL (1889)**

Stub Newell had begun bragging to relatives about the profitable fraud he had perpetrated on the American public.



## **NOV 1, 1869 (SYRACUSE STANDARD)**

Daniel Luce reports of an extremely large wagon carrying a sizable and heavy load traveling towards Cardiff the previous year.

## **ITHACA DAILY JOURNAL (1889)**

Stub Newell had begun bragging to relatives about the profitable fraud he had perpetrated on the American public.

## **NOV 1, 1869 (SYRACUSE STANDARD)**

Daniel Luce reports of an extremely large wagon carrying a sizable and heavy load traveling towards Cardiff the previous year.

## **ITHACA DAILY JOURNAL (1889)**

Stub Newell had begun bragging to relatives about the profitable fraud he had perpetrated on the American public.

*It is positively absurd to consider this a fossil man.  
It has none of the indications that would  
designate it as such, when examined by a  
practical chemist, geologist, or naturalist*

J.F. Boynton (University of Pennsylvania Geologist), *The Lafayette Wonder*, 1869

*I am surprised that any scientific observers should not have at once detected the unmistakable evidence against its antiquity*

Othniel C. Marsh (Yale University Paleontologist)

# THE CONFESSION

- ★ DECEMBER 1869 - GEORGE HULL (A DISTANT RELATIVE OF STUB NEWELL) ADMITS TO ORCHESTRATING THE FRAUD
- ★ HATCHED THE PLAN AFTER A HEATED ARGUMENT WITH A METHODIST MINISTER WHILE VISITING HIS SISTER'S HOUSE IN 1866
- ★ ARGUED THAT THE BIBLE WAS FILLED WITH TALL TALES THAT ONLY THE GULLIBLE WOULD BELIEVE

# THE CONFESSION

- ★ **DECEMBER 1869 - GEORGE HULL (A DISTANT RELATIVE OF STUB NEWELL) ADMITS TO ORCHESTRATING THE FRAUD**
- ★ HATCHED THE PLAN AFTER A HEATED ARGUMENT WITH A METHODIST MINISTER WHILE VISITING HIS SISTER'S HOUSE IN 1866
- ★ ARGUED THAT THE BIBLE WAS FILLED WITH TALL TALES THAT ONLY THE GULLIBLE WOULD BELIEVE

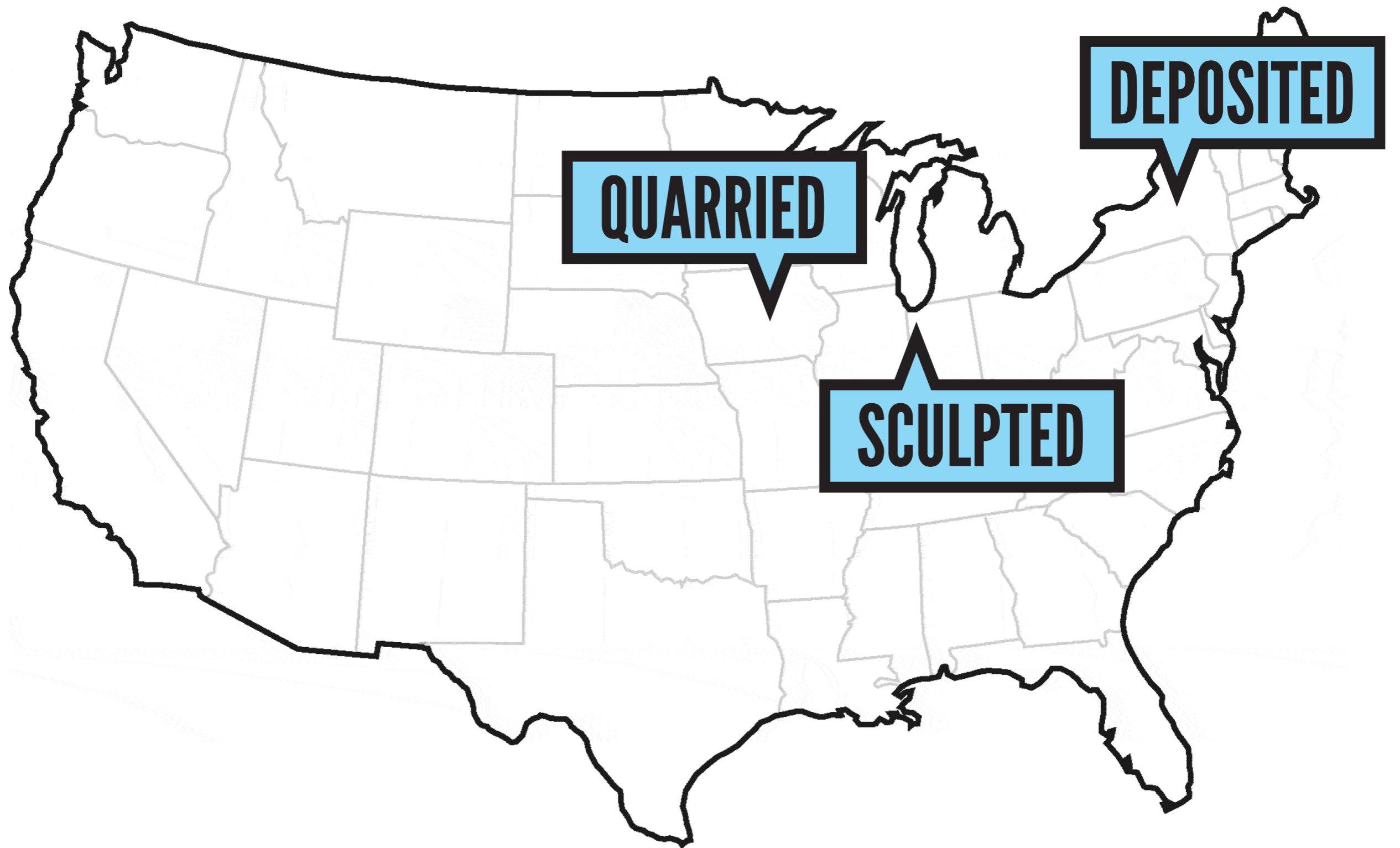
# THE CONFESSION

- ★ DECEMBER 1869 - GEORGE HULL (A DISTANT RELATIVE OF STUB NEWELL) ADMITS TO ORCHESTRATING THE FRAUD
- ★ **HATCHED THE PLAN AFTER A HEATED ARGUMENT WITH A METHODIST MINISTER WHILE VISITING HIS SISTER'S HOUSE IN 1866**
- ★ ARGUED THAT THE BIBLE WAS FILLED WITH TALL TALES THAT ONLY THE GULLIBLE WOULD BELIEVE

# THE CONFESSION

- ★ DECEMBER 1869 - GEORGE HULL (A DISTANT RELATIVE OF STUB NEWELL) ADMITS TO ORCHESTRATING THE FRAUD
- ★ HATCHED THE PLAN AFTER A HEATED ARGUMENT WITH A METHODIST MINISTER WHILE VISITING HIS SISTER'S HOUSE IN 1866
- ★ **ARGUED THAT THE BIBLE WAS FILLED WITH TALL TALES THAT ONLY THE GULLIBLE WOULD BELIEVE**





**QUARRIED**

**SCULPTED**

**DEPOSITED**

# MOTIVATIONS



## IDEOLOGY

Hull was an atheist, and believed that the fraud would prove his point about people believing anything that was mentioned in the bible (giants)

## MONEY

the amount of money generated by the giant (either directly or indirectly) was staggering - millions of dollars (by today's standards)

## IDEOLOGY

Hull was an atheist, and believed that the fraud would prove his point about people believing anything that was mentioned in the bible (giants)

## MONEY

the amount of money generated by the giant (either directly or indirectly) was staggering - millions of dollars (by today's standards)

**THE END OF THE  
GIANT**



## THE “REAL” GIANT

Became a frequent attraction at the New York State Fair. Eventually sold to Garder Cowles, Jr. (Iowa newspaper publisher). Acquired by the New York State Historical Society (1947) - Farmer's Museum (Cooperstown, NY)

## THE “FAKE” GIANT

P.T. Barnum - unable to “rent” the giant, created his own out of plaster. Now resides at Marvin's Marvelous Mechanical Museum in Farmington Hills, MI



## THE “REAL” GIANT

Became a frequent attraction at the New York State Dair. Eventually sold Sold to Garder Cowles, Jr. (Iowa newspaper publisher). Acquired by the New York State Historical Society (1947) - Farmer's Museum (Cooperstown, NY)

## THE “FAKE” GIANT

P.T. Barnum - unable to “rent” the giant, created his own out of plaster. Now resides at Marvin's Marvelous Mechanical Museum in Farmington Hills, MI

# FARMERS MUSEUM

**CARDIFF GIANT**  
GENUINE ORIGINAL  
*TALLER THAN GOLIATH WHOM DAVID SLEW*  
**10 FEET 4 1/2 INCHES TALL — WEIGHT 2990 LBS**  
SIX MILLION PEOPLE HAVE PAID TO SEE HIM. DAVID HARUM WAS HIS GOD FATHER  
**P.T. BARNUM OFFERED \$150000 FOR THE GIANT**  
*THE MOST VALUABLE SINGLE EXHIBIT IN THE WORLD TODAY*

**THE GREAT CARDIFF GIANT**  
PHENOMENON OF THE CENTURY!  
*Behold! Behold! Wonder!*

**THE MAIN EVENT**  
The Giant Was the Big Draw

**CONTROVERSY!**  
**HOAX EXPOSED!**  
THE CARDIFF GIANT



Ma  
July  
July  
August  
August  
August  
Sept  
13  
Sept  
20

# The **CARDIFF GIANT** ONE OF HISTORY'S HUGE HOAXES!

SUPPOSEDLY A PETRIFIED MAN, A REMNANT OF A LOST RACE  
THAT ROAMED THE STATE OF NEW YORK 2,000 YEARS AGO.

*Actually a figure carved in stone, discovered on a farm near Cardiff, N.Y. in 1869. It is genuine and even after 100 years it weighs 2,000 lbs.*

THIS HISTORICAL GIANT



1100  
PLUSH



The Dance



**SERIOUSLY**

**SO WHAT**

**① BIBLICAL LITERALISM**

**② ANTI-EVOLUTION**



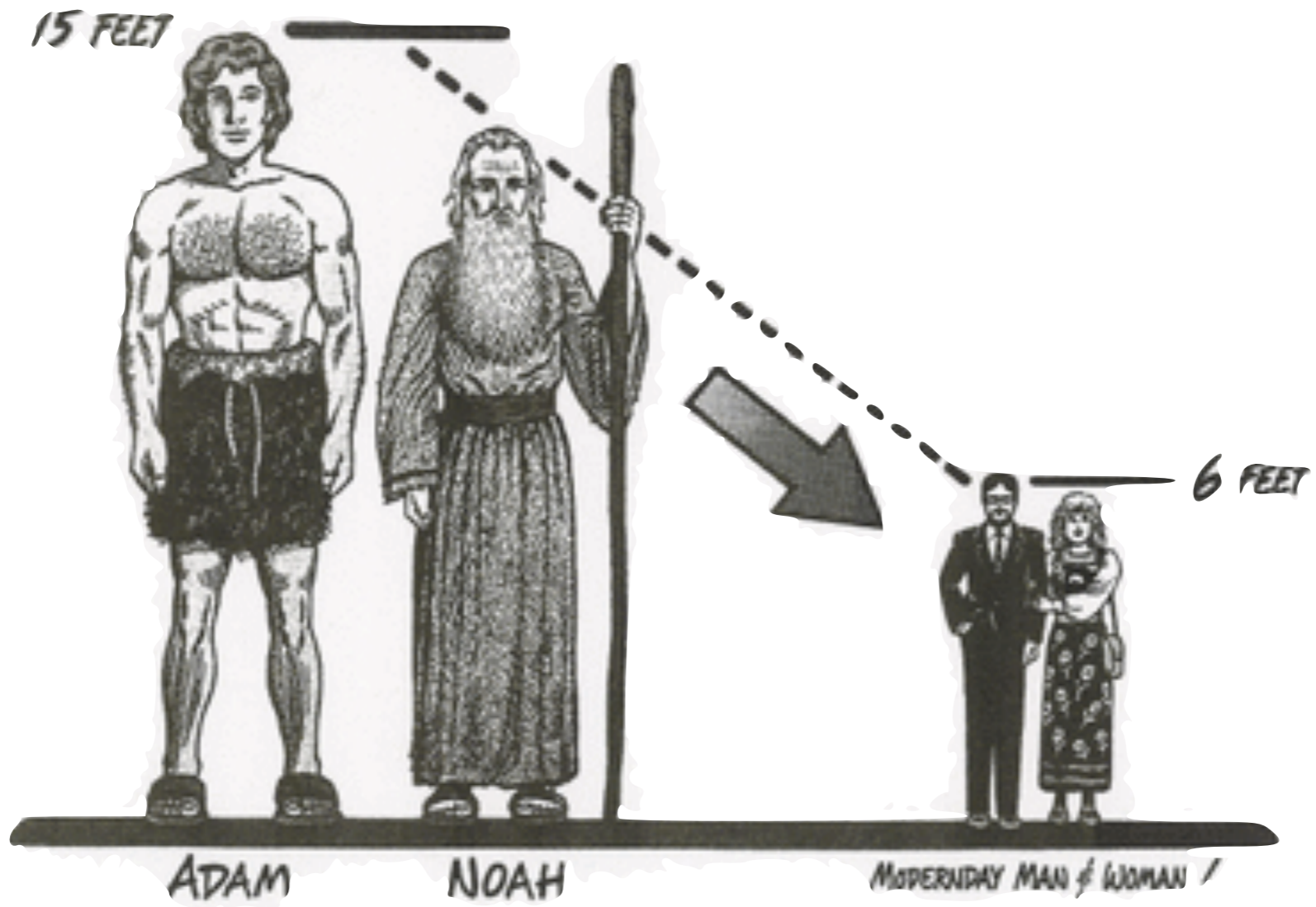












**THE END**